

Harris Central Appraisal District

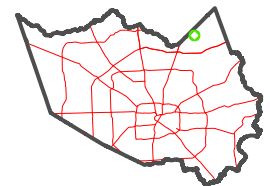


0 45 90 180 Feet

PUBLICATION DATE:
4/24/2023

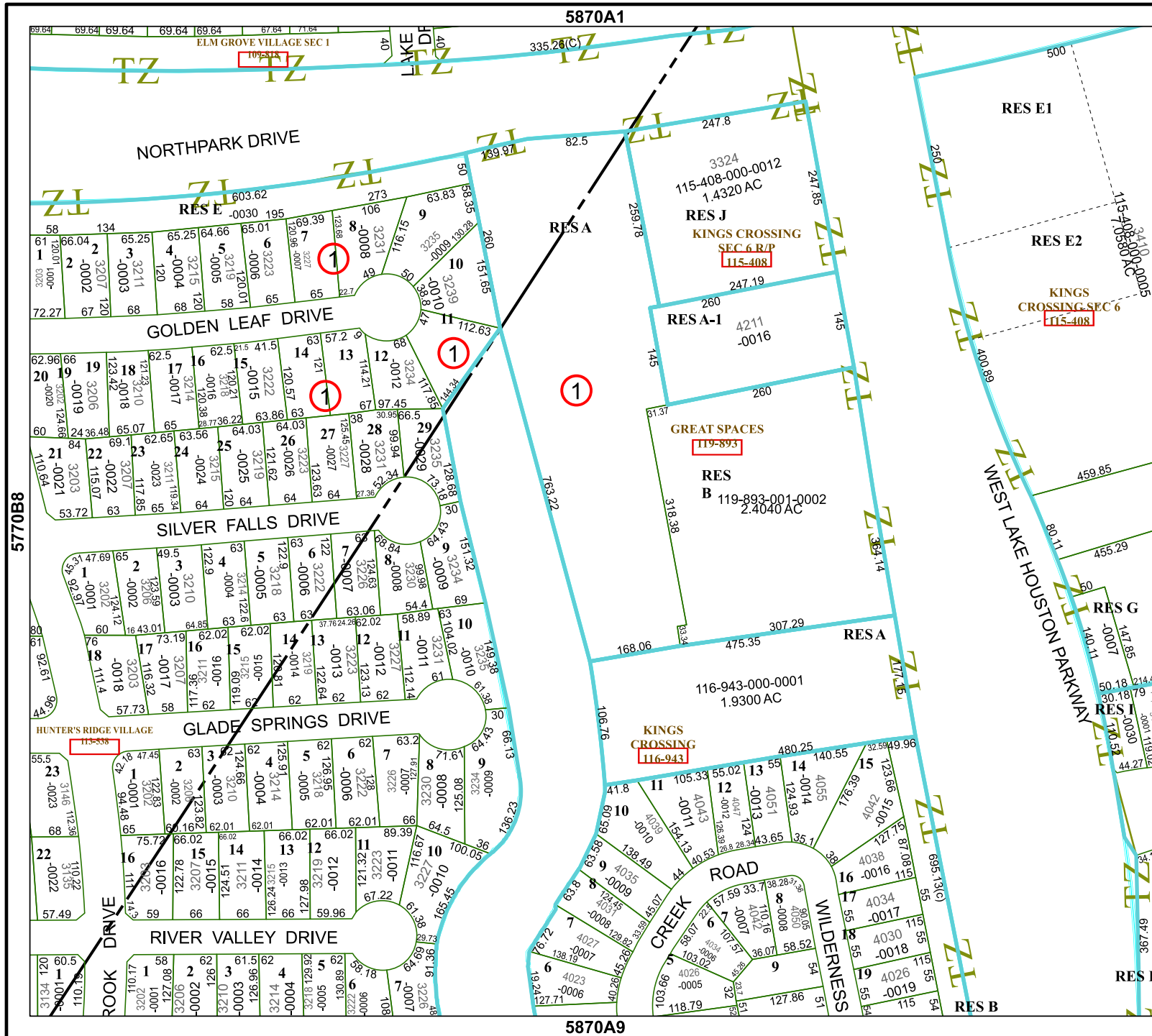
Geospatial or map data maintained by the Harris Central Appraisal District is for informational purposes and may not have been prepared for or be suitable for legal, engineering, or surveying purposes. It does not represent an on-the-ground survey and only represents the approximate location of property boundaries.

MAP LOCATION



FACET 5870A5

3	4	1	2	3
7	8	5	6	7
11	12	9	10	11



5870A1

RESA

1

5870A9

5770B8

5870A6

5870A7

5870A8

