

5872C9

5771B4

Harris Central Appraisal District

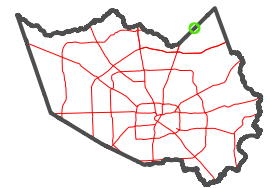


0 45 90 180 Feet

PUBLICATION DATE:
4/15/2025

Geospatial or map data maintained by the Harris Central Appraisal District is for informational purposes and may **not** have been prepared for or be suitable for legal, engineering, or surveying purposes. It does **not** represent an on-the-ground survey and only represents the approximate location of property boundaries.

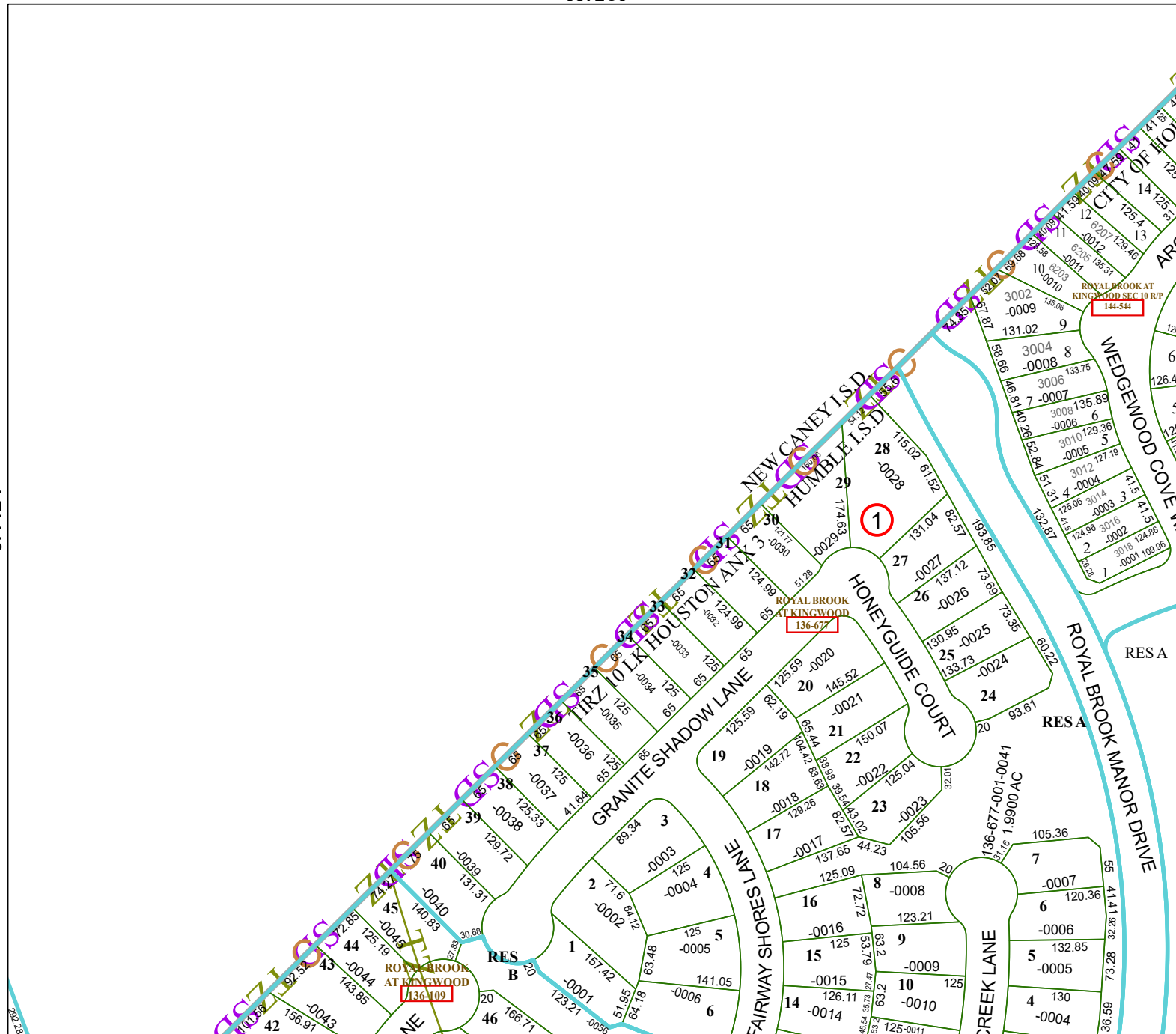
MAP LOCATION



FACET

5871A1

		9	10	11
3	4	5	2	3
7	8	5	6	7



5871A5