

Harris Central Appraisal District

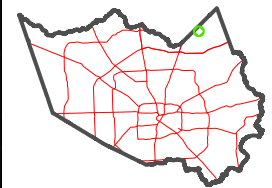


0 45 90 180 Feet

PUBLICATION DATE:
2/27/2023

Geospatial or map data maintained by the Harris Central Appraisal District is for informational purposes and may not have been prepared for or be suitable for legal, engineering, or surveying purposes. It does not represent an on-the-ground survey and only represents the approximate location of property boundaries.

MAP LOCATION

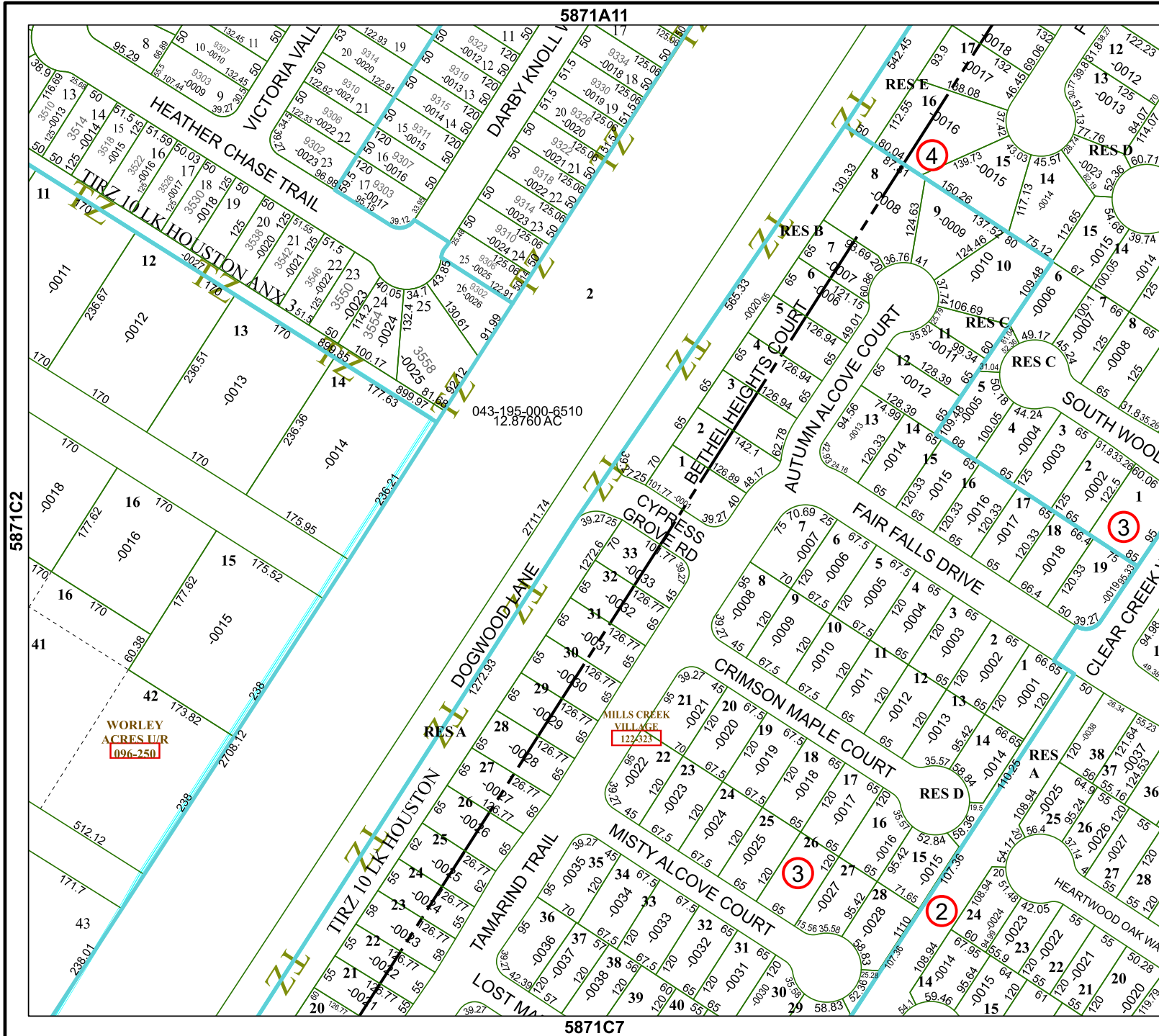


FACET 5871C3

9	10	11	12	9
1	2	3	4	1
5	6	7	8	5

5871A11

5871C7



5871C2

5871C4

WORLEY ACRES L/R
096-250

MILLS CREEK VILLAGE
122432

043-195-000-6510
12.8760 AC