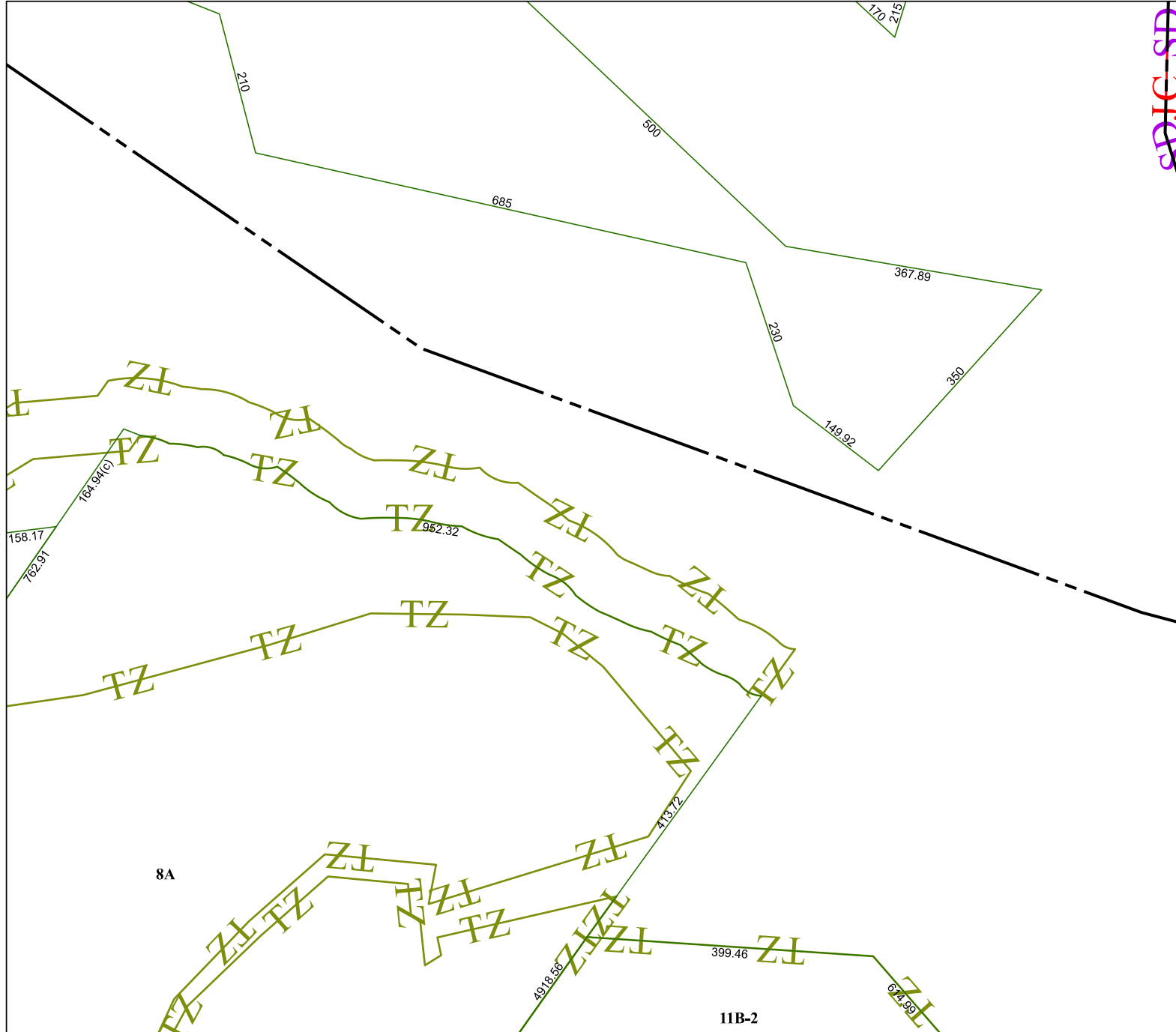


5871B11



SDJC SD

Harris Central Appraisal District



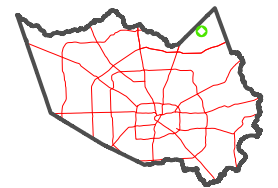
0 45 90 180 Feet

PUBLICATION DATE:
5/30/2024

Geospatial or map data maintained by the Harris Central Appraisal District is for informational purposes and may **not** have been prepared for or be suitable for legal, engineering, or surveying purposes. It does **not** represent an on-the-ground survey and only represents the approximate location of property boundaries.



MAP LOCATION



FACET 5871D3

9	10	11	12	9
1	2	3	4	1
5	6	7	8	5

5871D7

11B-2

8A

5871D2

5871D4