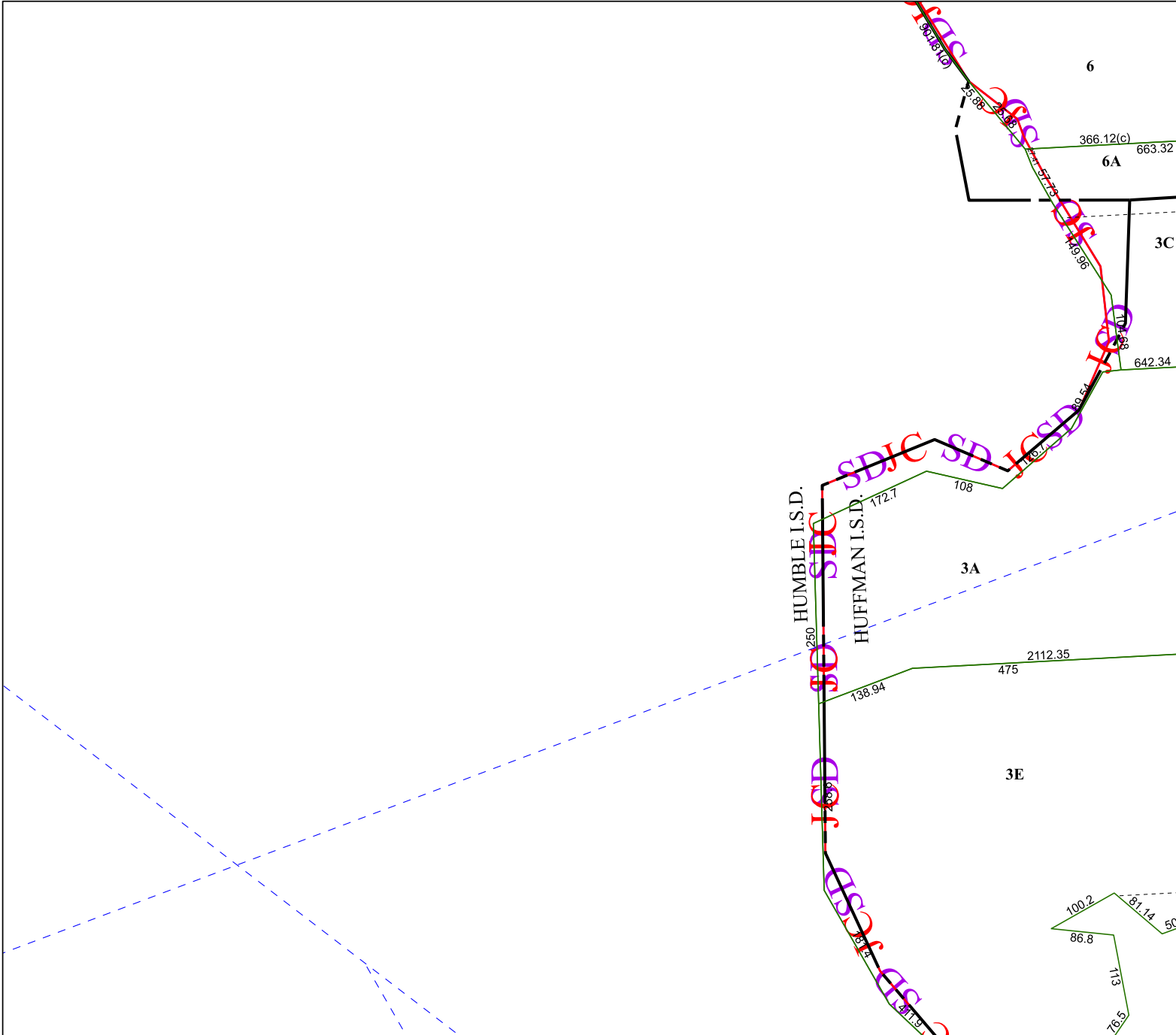


5872B12

5872D3



5872D8

Harris Central Appraisal District



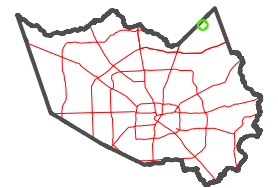
0 45 90 180 Feet

PUBLICATION DATE:
1/3/2023

Geospatial or map data maintained by the Harris Central Appraisal District is for informational purposes and may **not** have been prepared for or be suitable for legal, engineering, or surveying purposes. It does **not** represent an on-the-ground survey and only represents the approximate location of property boundaries.



MAP LOCATION



FACET

5872D4

| | | | | |
|----|----|----|---|----|
| 10 | 11 | 12 | 9 | 10 |
| 2 | 3 | 4 | 1 | 2 |
| 6 | 7 | 8 | 5 | 6 |

5972C1