

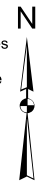
Harris Central Appraisal District



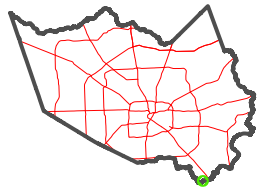
0 45 90 180 Feet

PUBLICATION DATE: 4/8/2024

Geospatial or map data maintained by the Harris Central Appraisal District is for informational purposes and may not have been prepared for or be suitable for legal, engineering, or surveying purposes. It does not represent an on-the-ground survey and only represents the approximate location of property boundaries.



MAP LOCATION



FACET 5947D10

8	5	6	7	8
12	9	10	11	12
4	1	2	3	4

5947D9

5947D11

5947D6

5946B2

23D

RIVERSIDE DRIVE (PRIVATE)

23C

RES D