

5949C11

# Harris Central Appraisal District



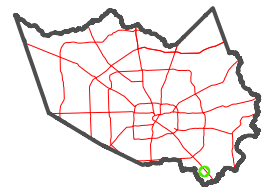
0 45 90 180 Feet

PUBLICATION DATE:  
2/13/2024

Geospatial or map data maintained by the Harris Central Appraisal District is for informational purposes and may not have been prepared for or be suitable for legal, engineering, or surveying purposes. It does not represent an on-the-ground survey and only represents the approximate location of property boundaries.



MAP LOCATION



# FACET

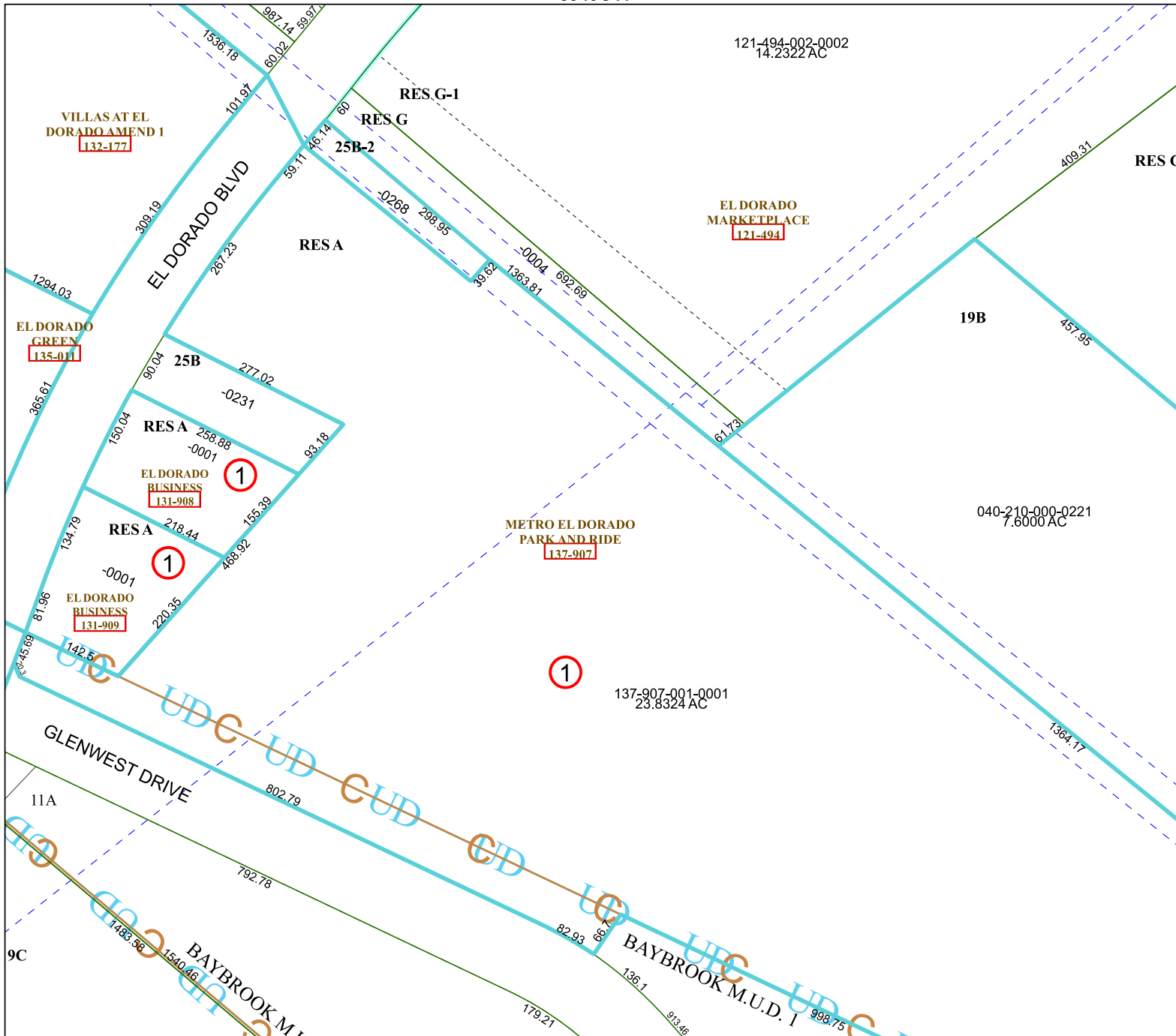
5948A3

9	10	11	12	9
1	2	3	4	1
5	6	7	8	5

5948A2

5948A4

5948A7



121-494-002-0002  
14.2322 AC

19B

040-210-000-0221  
7.6000 AC

137-907-001-0001  
23.8324 AC

BAYBROOK M.U.D. 1