

Harris Central Appraisal District

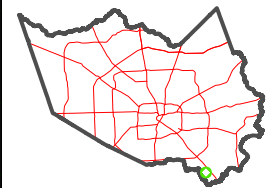


0 45 90 180 Feet

PUBLICATION DATE:
2/13/2024

Geospatial or map data maintained by the Harris Central Appraisal District is for informational purposes and may not have been prepared for or be suitable for legal, engineering, or surveying purposes. It does not represent an on-the-ground survey and only represents the approximate location of property boundaries.

MAP LOCATION

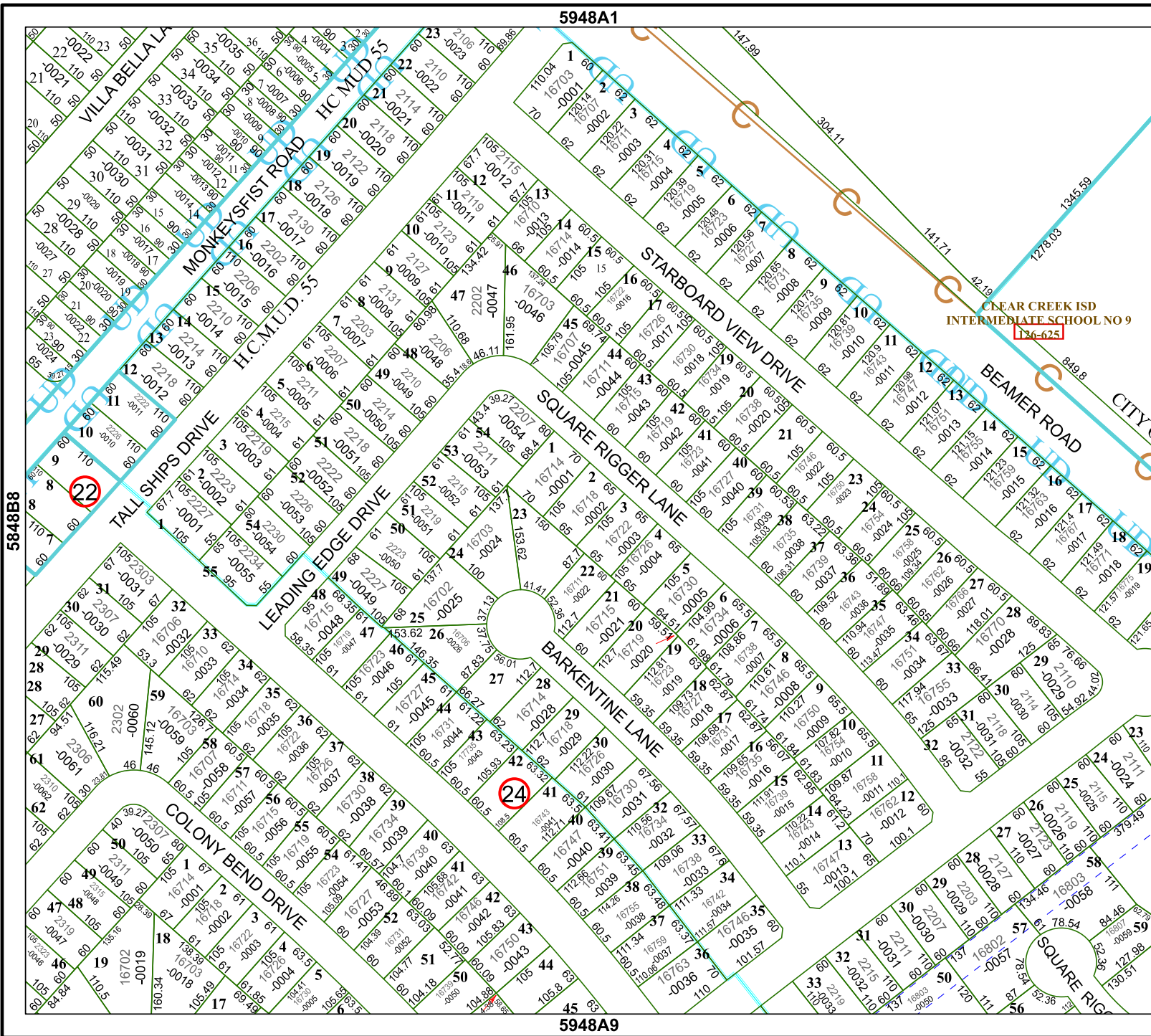


FACET 5948A5

3	4	1	2	3
7	8	5	6	7
11	12	9	10	11

5948A1

5948A9



CLEAR CREEK ISD
INTERMEDIATE SCHOOL NO 9
136-625

5848B8

5948A6

