

5949B3

CLEAR LAKE CITY CORE B

100-100

Harris Central Appraisal District

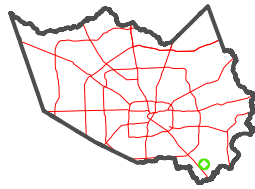


0 45 90 180 Feet

PUBLICATION DATE: 1/3/2023

Geospatial or map data maintained by the Harris Central Appraisal District is for informational purposes and may not have been prepared for or be suitable for legal, engineering, or surveying purposes. It does not represent an on-the-ground survey and only represents the approximate location of property boundaries.

MAP LOCATION



FACET 5949B7

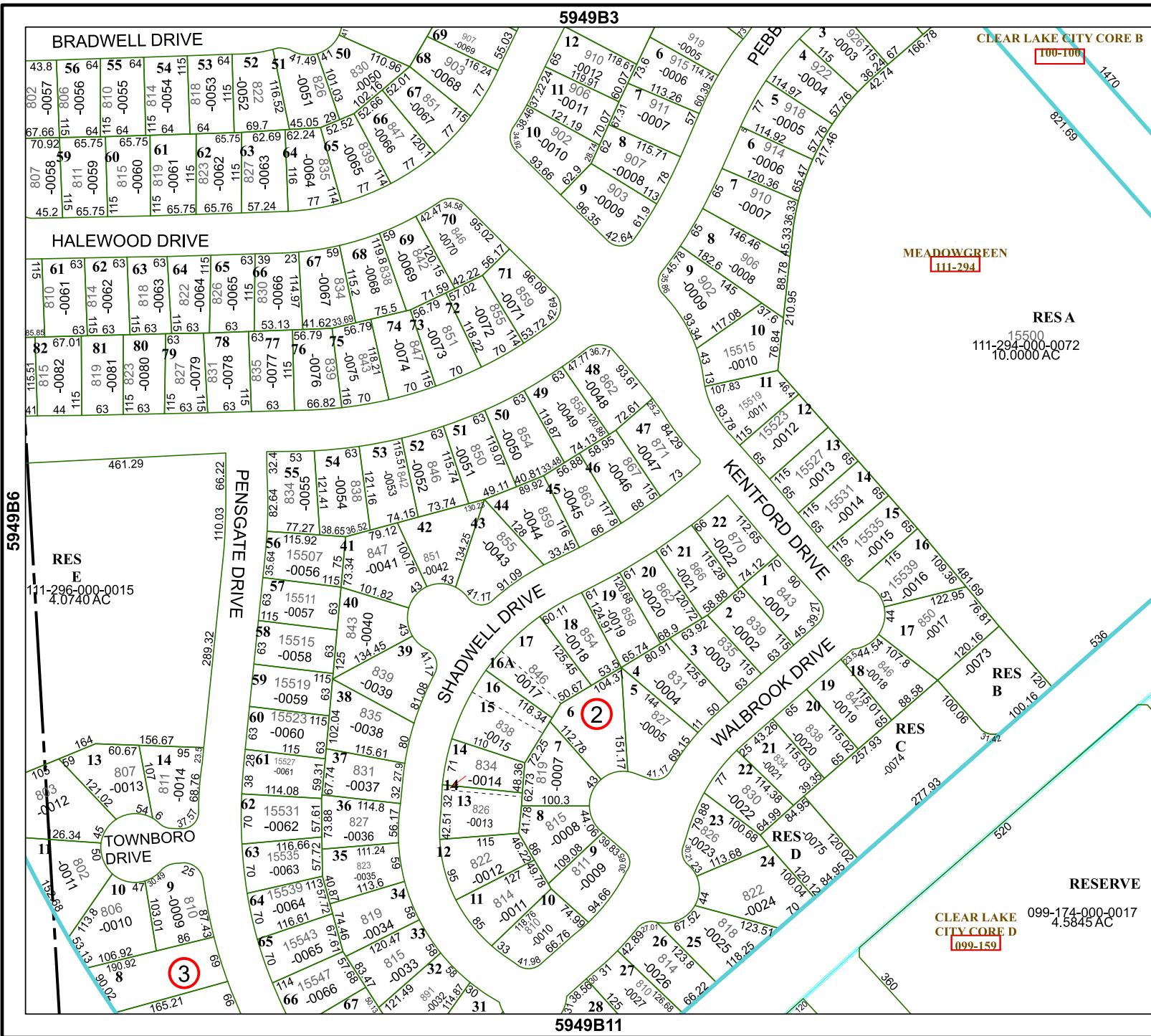
1	2	3	4	1
5	6	7	8	5
9	10	11	12	9

RESERVE

CLEAR LAKE CITY CORE D
109-159

099-174-000-0017
4.5845 AC

5949B11



5949B6

5949B8