

Harris Central Appraisal District



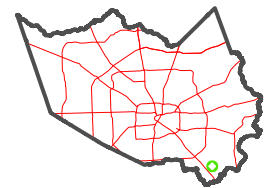
0 45 90 180 Feet

PUBLICATION DATE:
1/3/2023

Geospatial or map data maintained by the Harris Central Appraisal District is for informational purposes and may not have been prepared for or be suitable for legal, engineering, or surveying purposes. It does not represent an on-the-ground survey and only represents the approximate location of property boundaries.

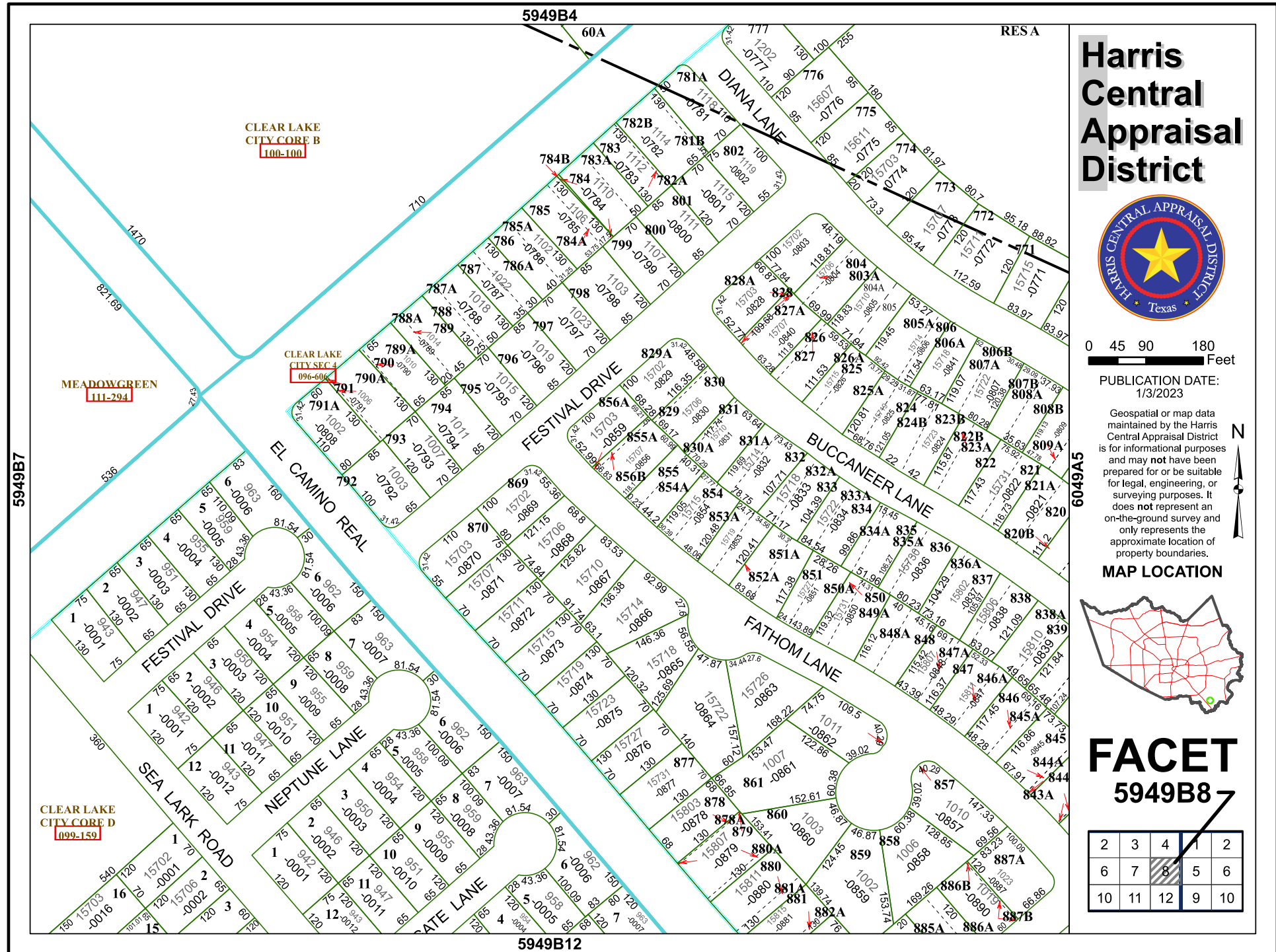


MAP LOCATION



FACET 5949B8

2	3	4	5	6
6	7	8	9	10
10	11	12	1	2



CLEAR LAKE CITY CORE B
100-100

CLEAR LAKE CITY SEC 4
096-606

MEADOWGREEN
111-294

CLEAR LAKE CITY CORE D
099-159

5949B4

RESA

5949B12

6049A5

5949B7