

Harris Central Appraisal District

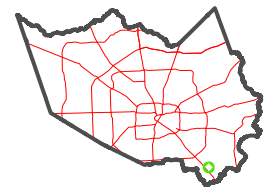


0 45 90 180 Feet

PUBLICATION DATE: 1/3/2023

Geospatial or map data maintained by the Harris Central Appraisal District is for informational purposes and may not have been prepared for or be suitable for legal, engineering, or surveying purposes. It does not represent an on-the-ground survey and only represents the approximate location of property boundaries.

MAP LOCATION

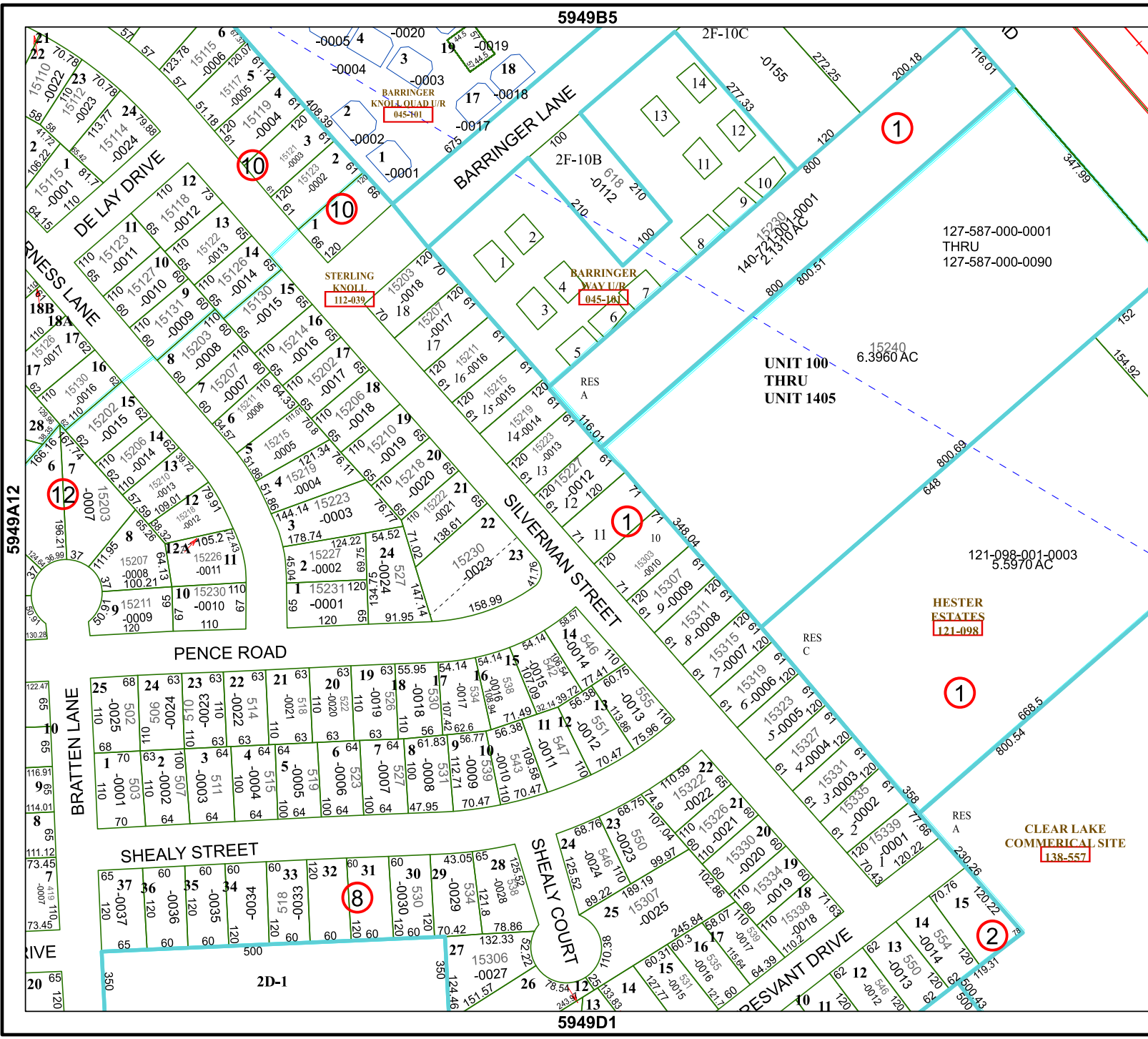


FACET 5949B9

7	8	5	6	7
11	12	9	10	11
3	4	1	2	3

5949B5

5949D1



127-587-000-0001
THRU
127-587-000-0090

UNIT 100
THRU
UNIT 1405

15240
6.3960 AC

121-098-001-0003
5.5970 AC

HESTER
ESTATES
121-098

CLEAR LAKE
COMMERCIAL SITE
138-557

