

5949A12

Harris Central Appraisal District

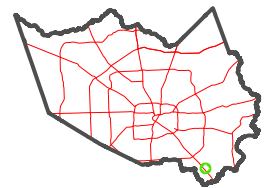


0 45 90 180 Feet

PUBLICATION DATE: 1/30/2023

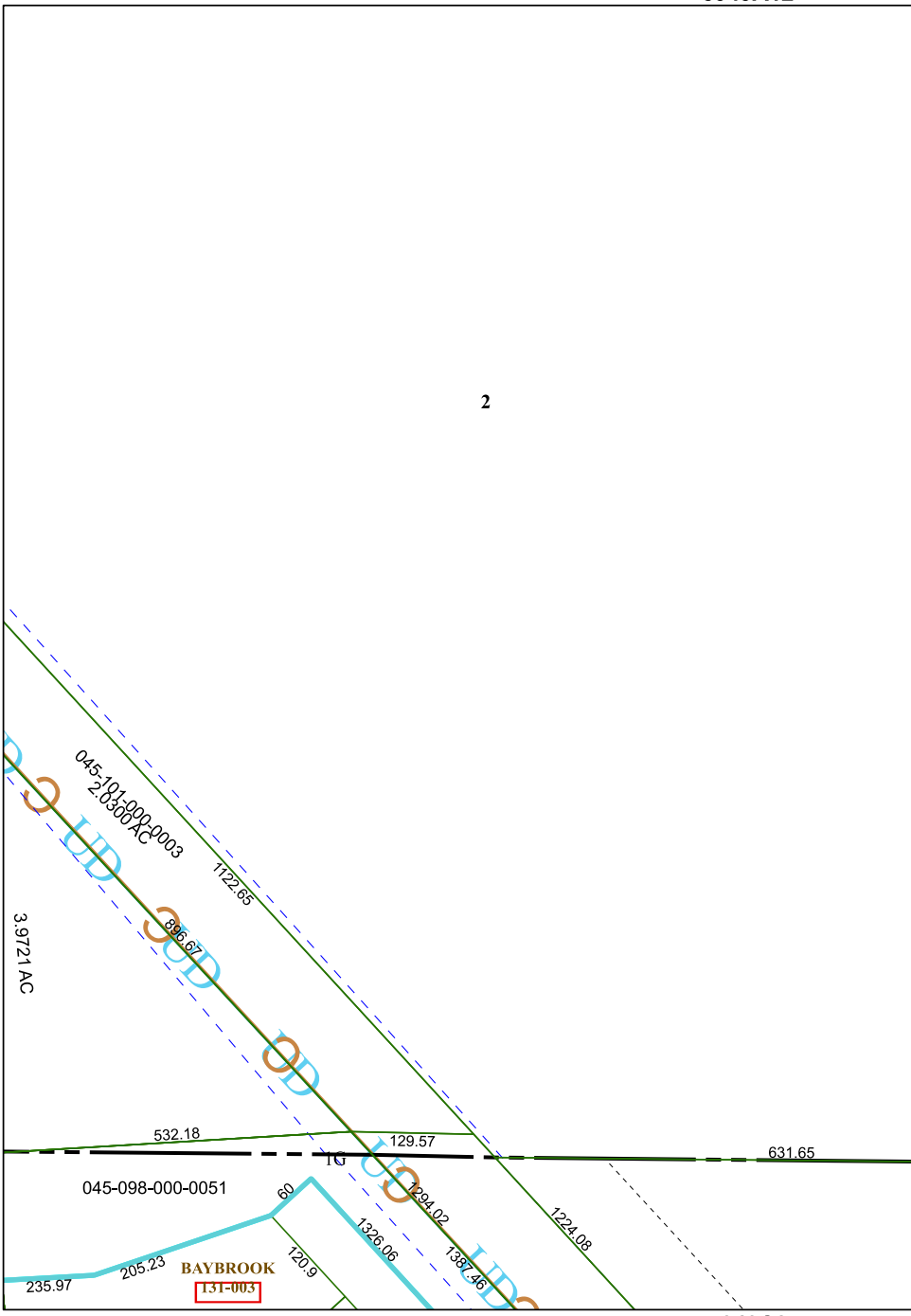
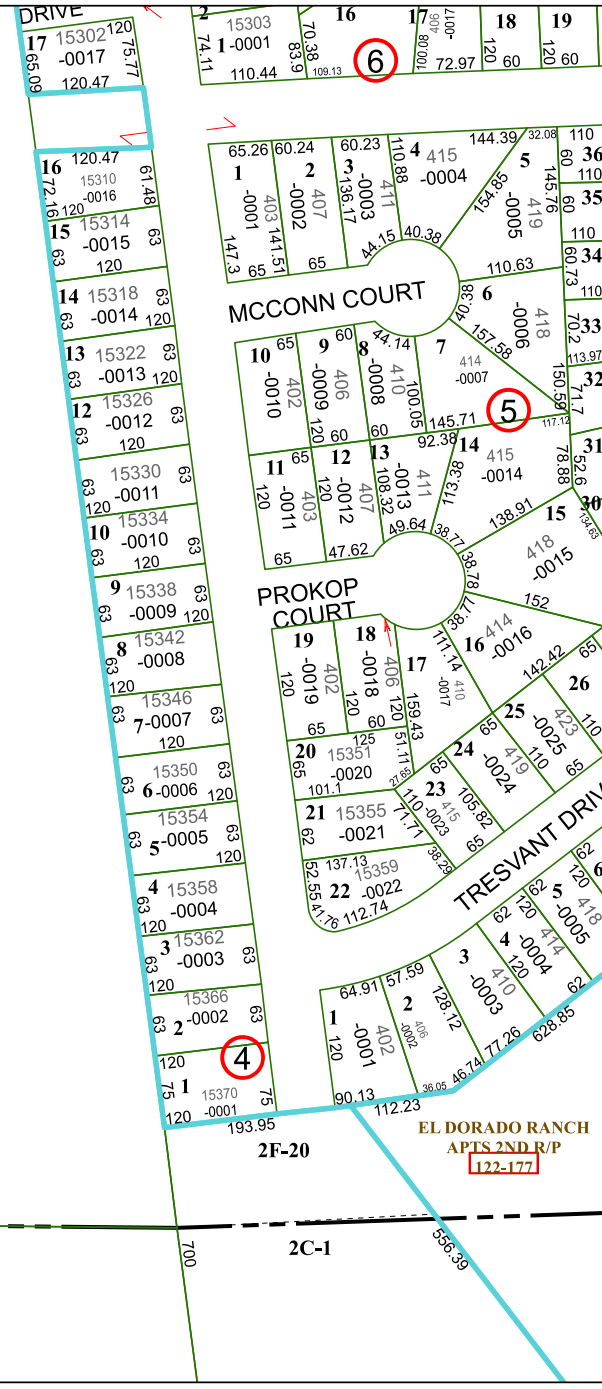
Geospatial or map data maintained by the Harris Central Appraisal District is for informational purposes and may not have been prepared for or be suitable for legal, engineering, or surveying purposes. It does not represent an on-the-ground survey and only represents the approximate location of property boundaries.

MAP LOCATION



FACET 5949C4

10	11	12	9	10
2	3	4	1	2
6	7	8	5	6



5949C8

5949C3

5949D1

2