

Harris Central Appraisal District

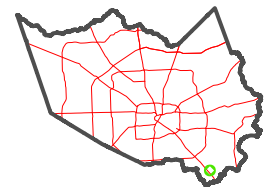


0 45 90 180 Feet

PUBLICATION DATE:
1/3/2023

Geospatial or map data maintained by the Harris Central Appraisal District is for informational purposes and may not have been prepared for or be suitable for legal, engineering, or surveying purposes. It does not represent an on-the-ground survey and only represents the approximate location of property boundaries.

MAP LOCATION

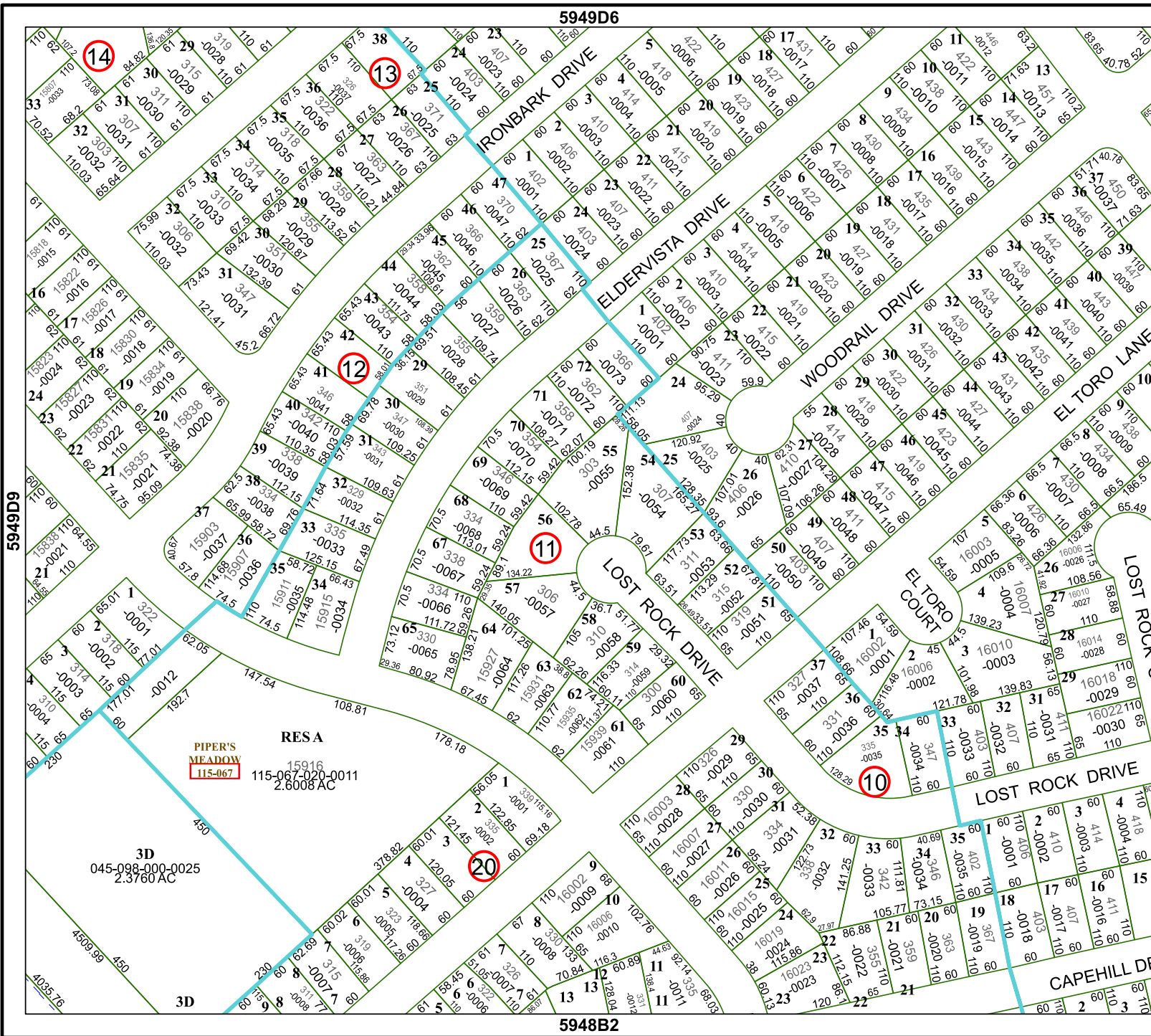


FACET 5949D10

8	5	6	7	8
12	9	10	11	12
4	1	2	3	4

5949D6

5948B2



RESA
PIPER'S MEADOW
115-067-020-0011
2.6008 AC

3D
045-098-000-0025
2.3760 AC

3D

5949D9

5949D11