

Harris Central Appraisal District

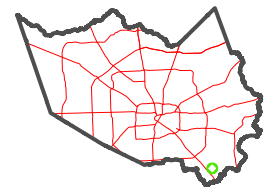


0 45 90 180 Feet

PUBLICATION DATE:
1/3/2023

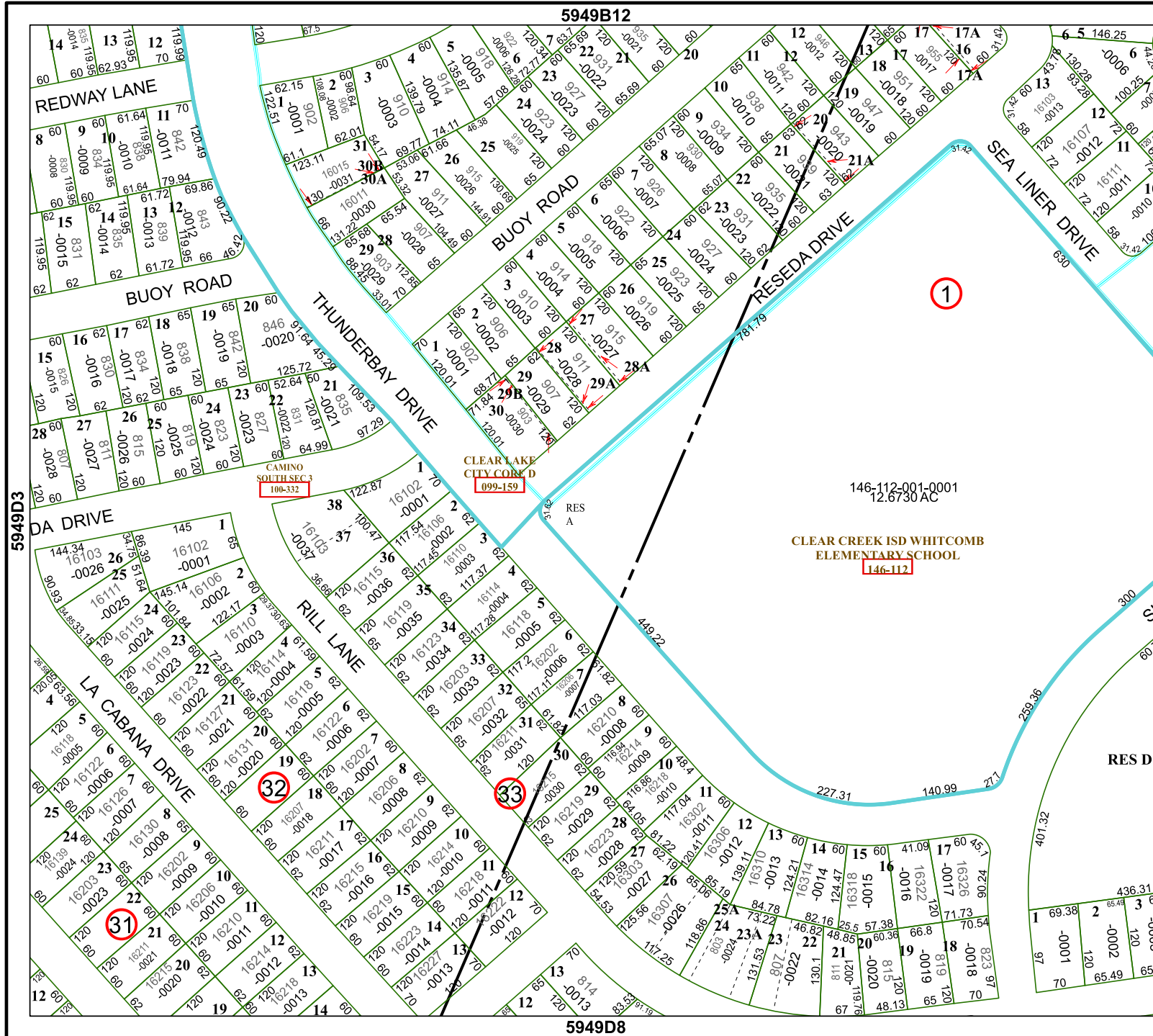
Geospatial or map data maintained by the Harris Central Appraisal District is for informational purposes and may not have been prepared for or be suitable for legal, engineering, or surveying purposes. It does not represent an on-the-ground survey and only represents the approximate location of property boundaries.

MAP LOCATION



FACET 5949D4

10	11	12	13	14
2	3	4	5	6
7	8	9	10	11



146-112-001-0001
12.6730 AC

CLEAR CREEK ISD WHITCOMB
ELEMENTARY SCHOOL
146-112

CLEAR LAKE
CITY CORP D
099-159

CAMINO
SOUTH SEC 3
100-332