

5949D2

BRADFORD POINT APARTS  
117-039

BRADFORD POINT APARTMENTS SEC 2  
117-335

# Harris Central Appraisal District

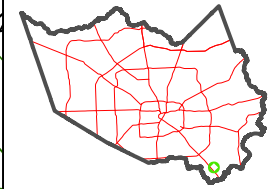


0 45 90 180 Feet

PUBLICATION DATE:  
1/3/2023

Geospatial or map data maintained by the Harris Central Appraisal District is for informational purposes and may not have been prepared for or be suitable for legal, engineering, or surveying purposes. It does not represent an on-the-ground survey and only represents the approximate location of property boundaries.

MAP LOCATION

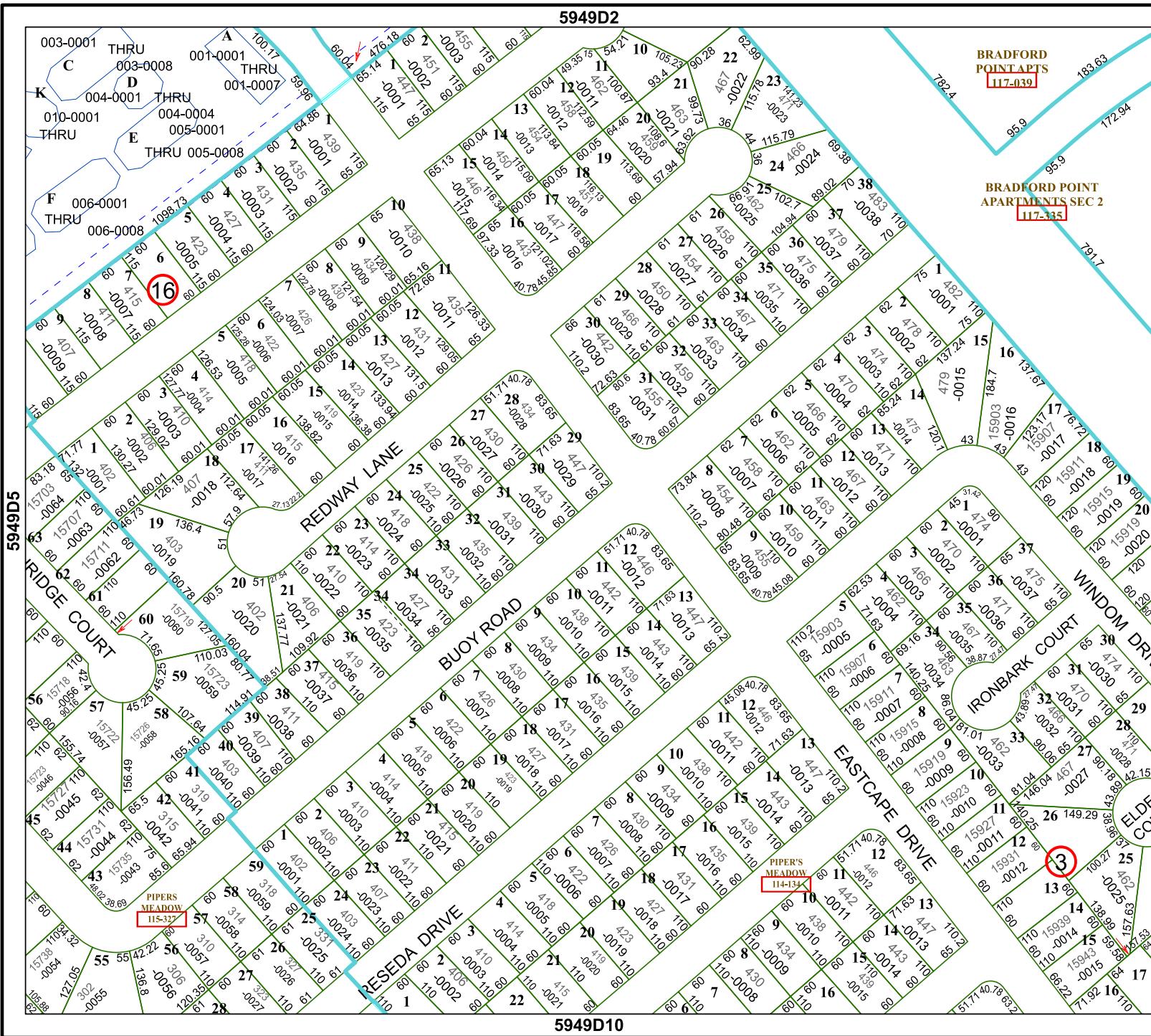


## FACET

5949D6

4	1	2	3	4
8	5	6	7	8
12	9	10	11	12

5949D10



5949D5

5949D7

