

# Harris Central Appraisal District

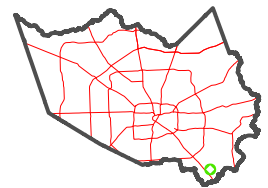


0 45 90 180 Feet

PUBLICATION DATE: 1/3/2023

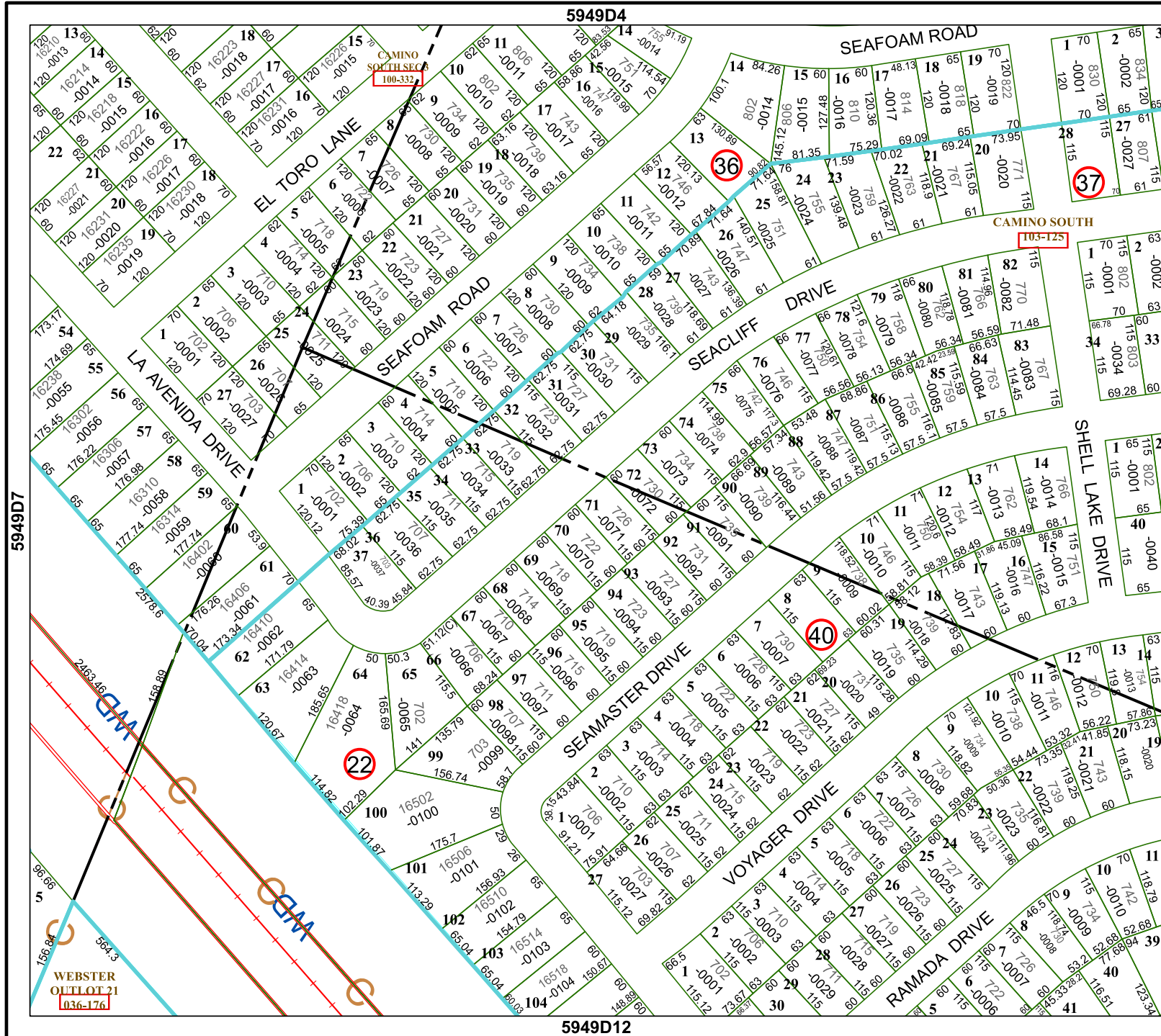
Geospatial or map data maintained by the Harris Central Appraisal District is for informational purposes and may not have been prepared for or be suitable for legal, engineering, or surveying purposes. It does not represent an on-the-ground survey and only represents the approximate location of property boundaries.

MAP LOCATION



## FACET 5949D8

2	3	4	5	6
6	7	8	9	10
10	11	12	13	14



5949D4

5949D12

6049C20

5949D7

WEBSTER  
OUTLOT 21  
036-176