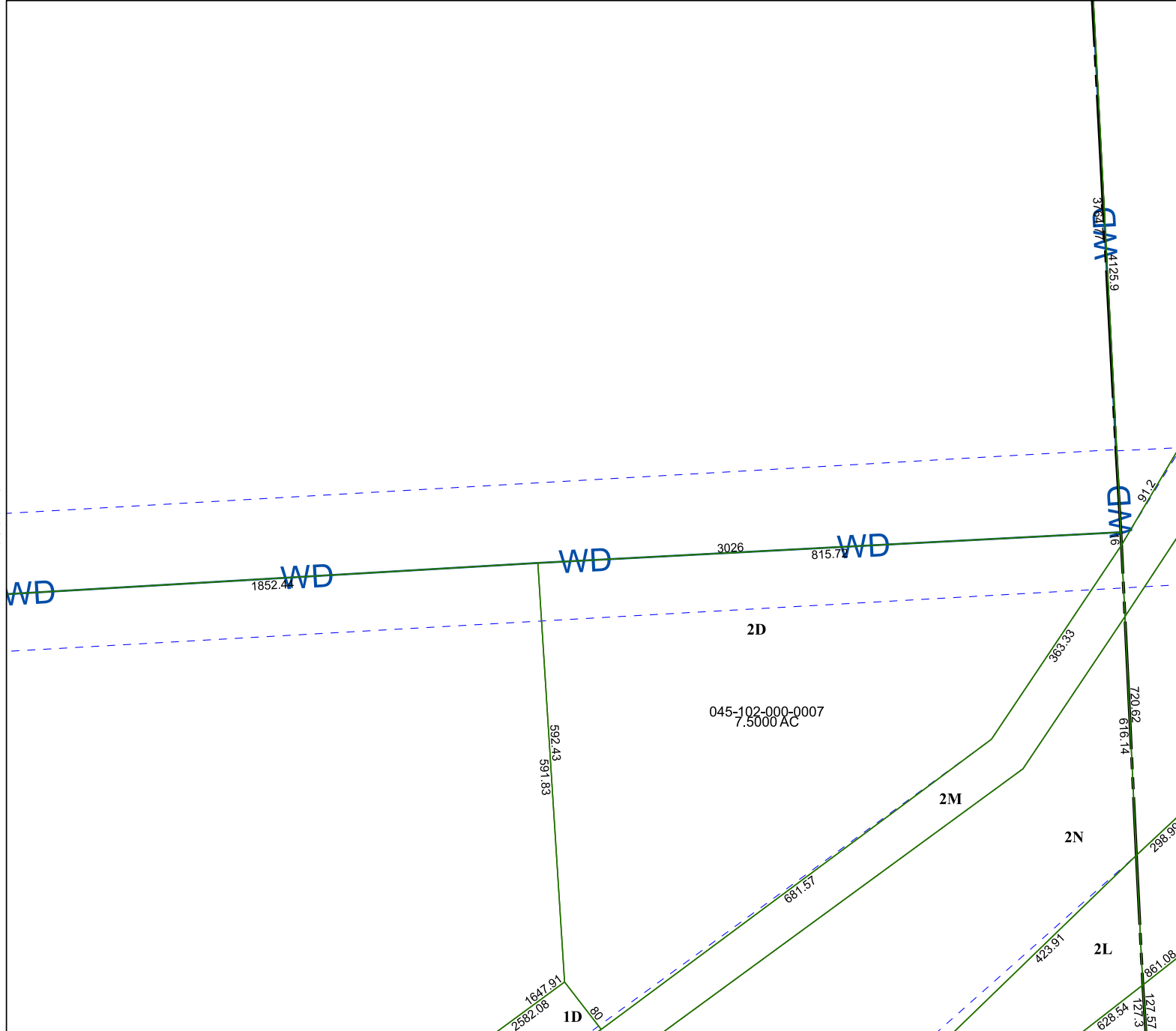


5950A3

5950A6



5950A11

Harris Central Appraisal District



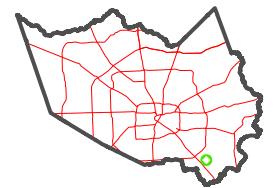
0 45 90 180 Feet

PUBLICATION DATE:
4/11/2023

Geospatial or map data maintained by the Harris Central Appraisal District is for informational purposes and may **not** have been prepared for or be suitable for legal, engineering, or surveying purposes. It does **not** represent an on-the-ground survey and only represents the approximate location of property boundaries.



MAP LOCATION



FACET 5950A7

1	2	3	4	1
5	6	7	8	5
9	10	11	12	9