

Harris Central Appraisal District



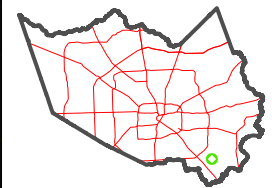
0 45 90 180 Feet

PUBLICATION DATE:
4/11/2023

Geospatial or map data maintained by the Harris Central Appraisal District is for informational purposes and may not have been prepared for or be suitable for legal, engineering, or surveying purposes. It does not represent an on-the-ground survey and only represents the approximate location of property boundaries.



MAP LOCATION

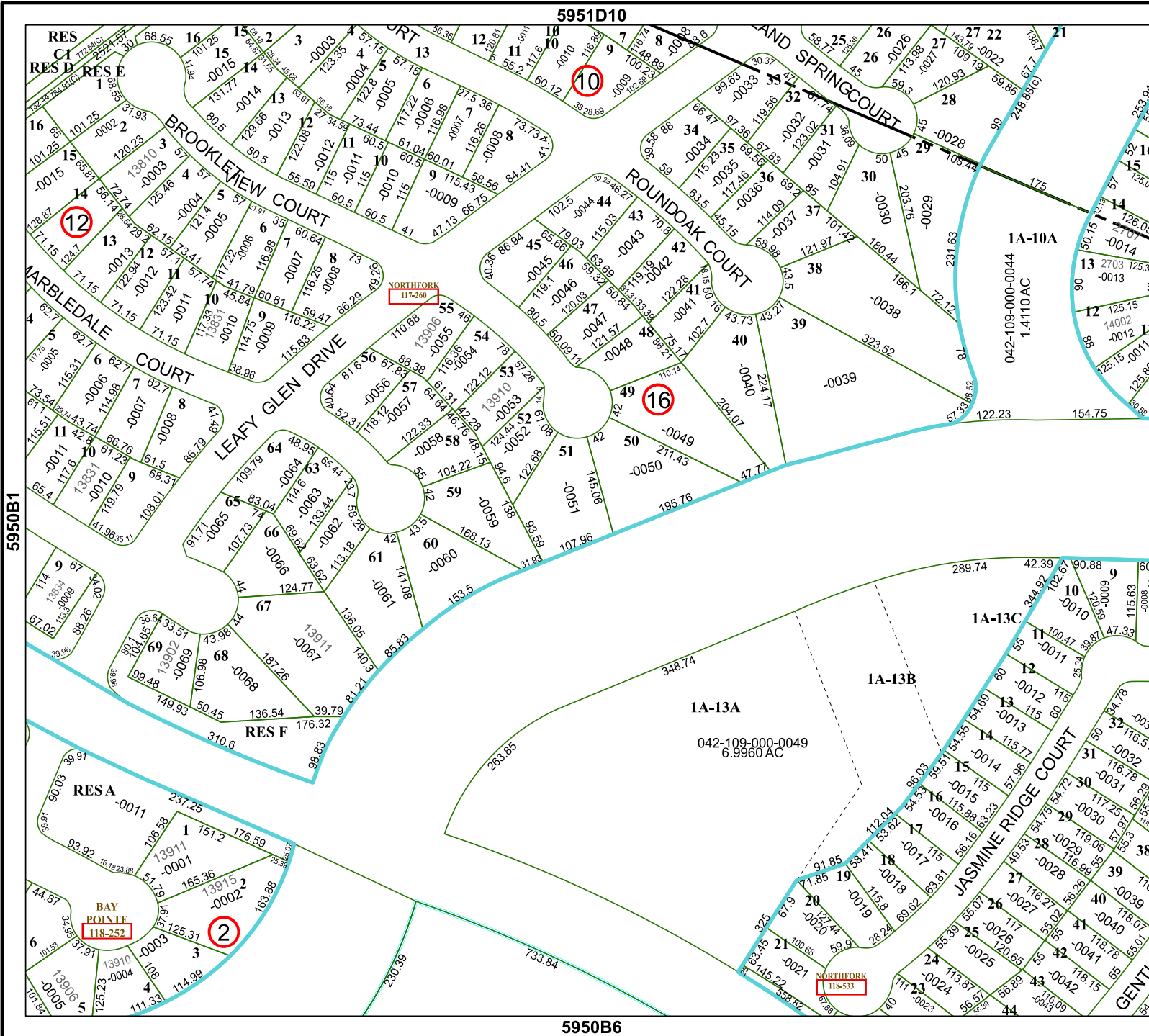


FACET 5950B2

12	9	10	11	12
4	1	2	3	4
8	5	6	7	8

5951D10

5950B6



5950B1

5950B3

NORTHFORK
117-260

NORTHFORK
118-533

RES C1
RES D RES E

BROOKVIEW COURT

ROUND OAK COURT

LEAFY GLEN DRIVE

MARBLEDALE COURT

RESA

BAY POINTE
118-252

1A-13A

1A-13B

1A-13C

JASMINE RIDGE COURT

RES F

GENTLE