

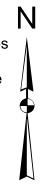
Harris Central Appraisal District



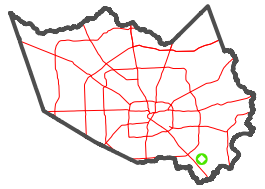
0 45 90 180 Feet

PUBLICATION DATE: 4/11/2023

Geospatial or map data maintained by the Harris Central Appraisal District is for informational purposes and may not have been prepared for or be suitable for legal, engineering, or surveying purposes. It does not represent an on-the-ground survey and only represents the approximate location of property boundaries.



MAP LOCATION



FACET 5950B9

7	8	5	6	7
11	12	9	10	11
3	4	1	2	3

RES C
117-489-004-0028
2.6510 AC

BAY POINTE
117-489

RES D

RES A

RES C

RES B

RES A

5950A12

5950B5

5950D1

5950B10

BAY GLYN
117-516