

# Harris Central Appraisal District

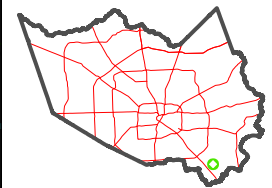


0 45 90 180 Feet

PUBLICATION DATE: 1/3/2023

Geospatial or map data maintained by the Harris Central Appraisal District is for informational purposes and may not have been prepared for or be suitable for legal, engineering, or surveying purposes. It does not represent an on-the-ground survey and only represents the approximate location of property boundaries.

MAP LOCATION

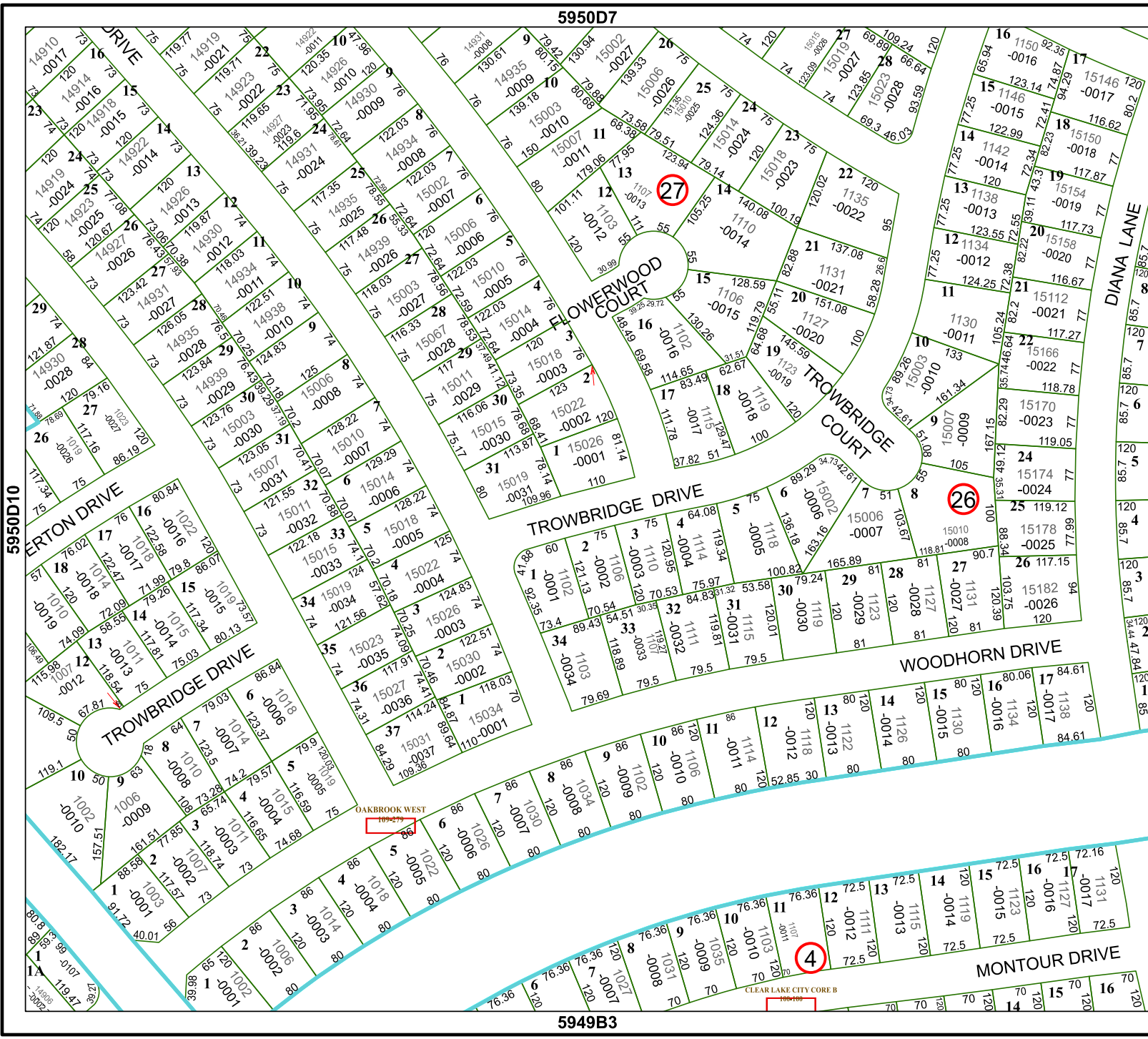


## FACET 5950D11

5	6	7	8	5
9	10	11	12	9
1	2	3	4	1

5950D7

5949B3



5950D10

5950D12

DIANA LANE

CLEAR LAKE CITY CORE B