

Harris Central Appraisal District

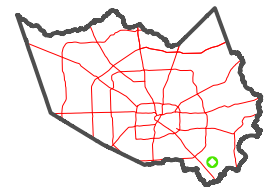


0 45 90 180 Feet

PUBLICATION DATE:
5/11/2023

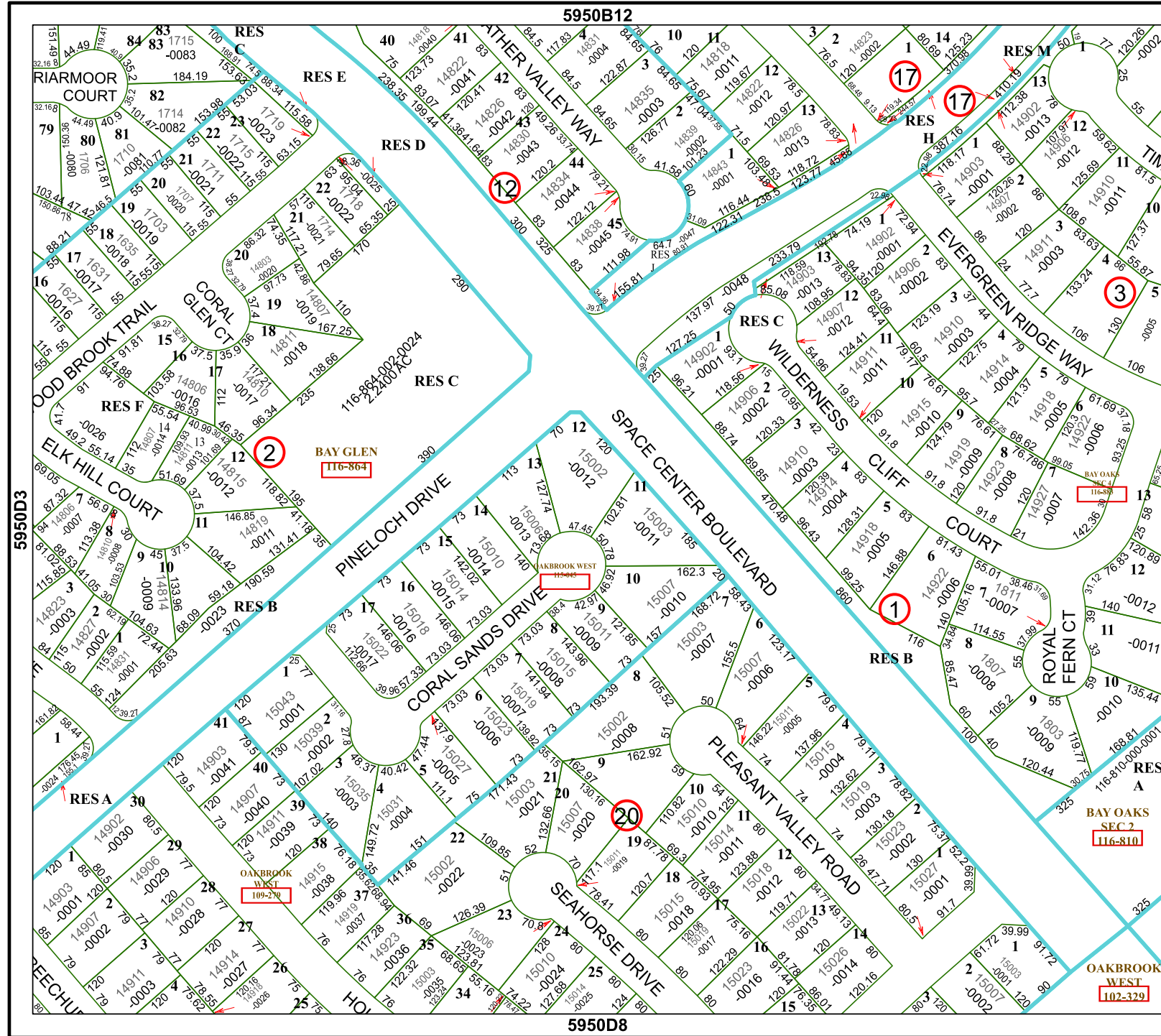
Geospatial or map data maintained by the Harris Central Appraisal District is for informational purposes and may not have been prepared for or be suitable for legal, engineering, or surveying purposes. It does not represent an on-the-ground survey and only represents the approximate location of property boundaries.

MAP LOCATION



FACET 5950D4

10	11	12	9	10
2	3	4	1	2
6	7	8	5	6



BAY GLEN
116-364

OAKBROOK WEST
116-810

BAY OAKS
SEC 2
116-810

OAKBROOK WEST
1102-329

5950B12

5950D8

5950D3

6050C1