

# Harris Central Appraisal District

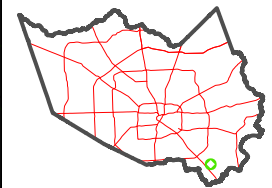


0 45 90 180 Feet

PUBLICATION DATE:  
1/3/2023

Geospatial or map data maintained by the Harris Central Appraisal District is for informational purposes and may not have been prepared for or be suitable for legal, engineering, or surveying purposes. It does not represent an on-the-ground survey and only represents the approximate location of property boundaries.

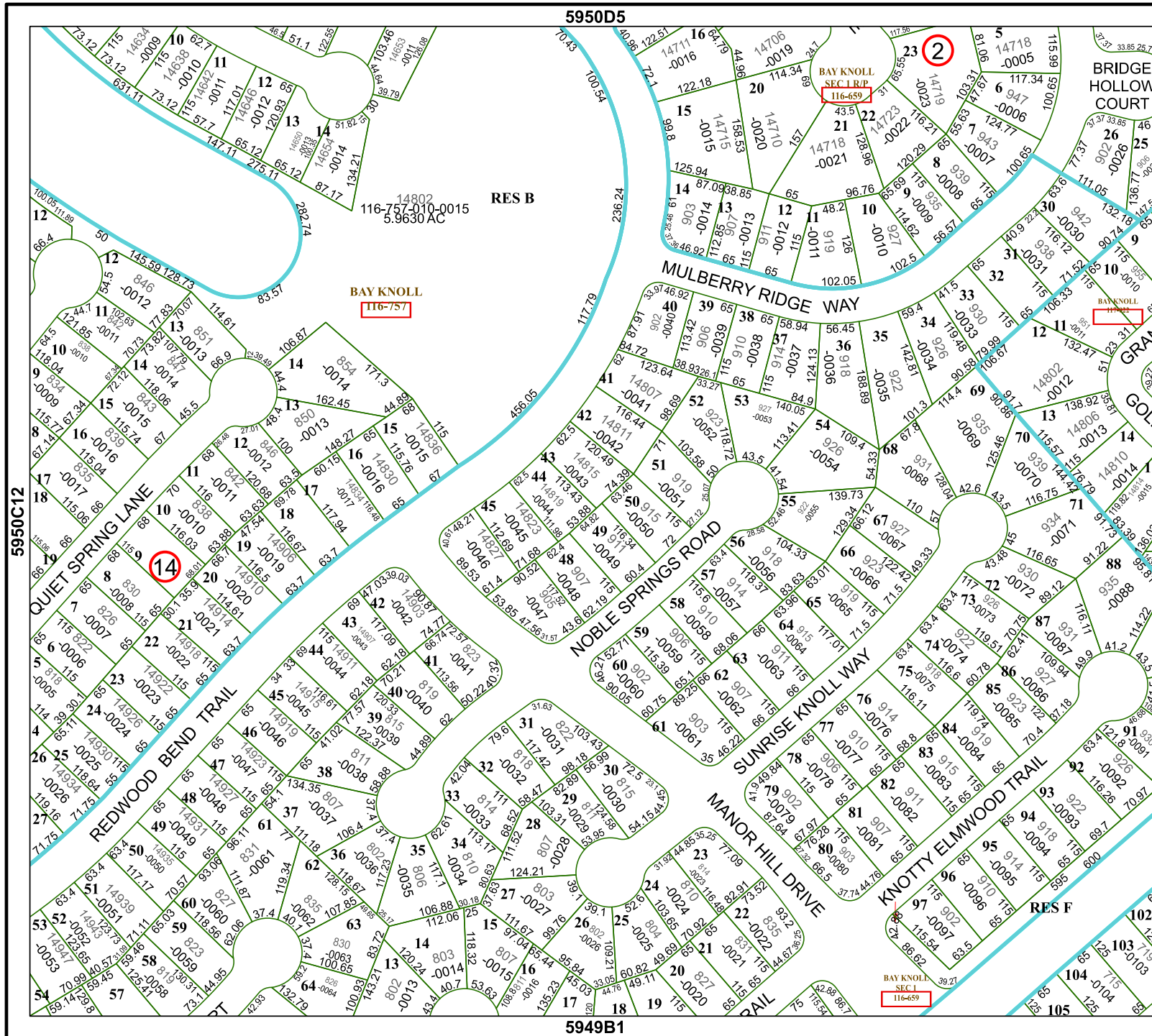
MAP LOCATION



## FACET

### 5950D9

7	8	5	6	7
11	12	9	10	11
3	4	1	2	3



5950D5

5949B1

5950C12

5950D10

RES B

BRIDGE HOLLOW COURT

RES F

BAY KNOLL  
116-757

BAY KNOLL  
SEC 1 R/P  
116-659

BAY KNOLL  
SEC 1  
116-659