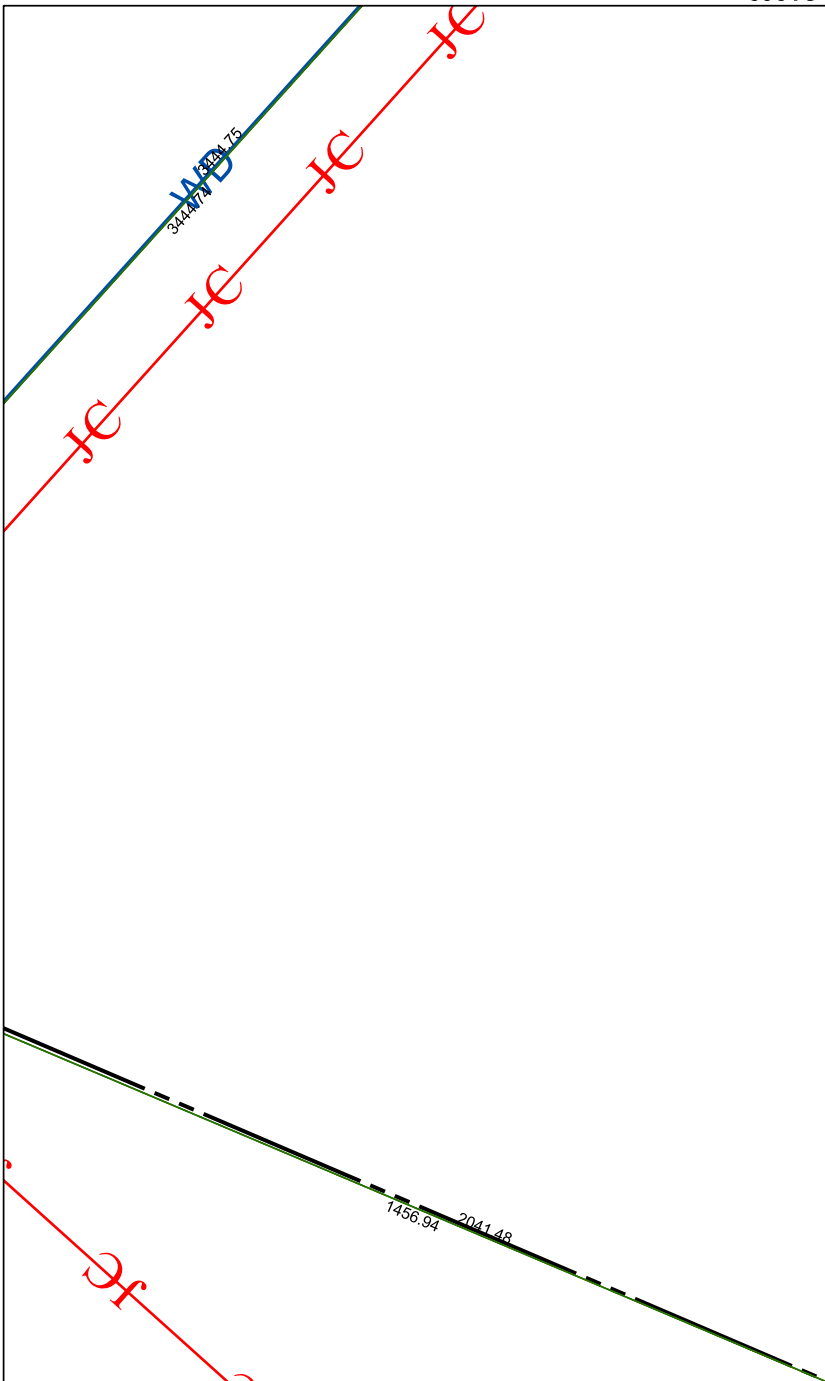


5951C4

041-009-000-0098  
105.5698 AC

5951C7



5951C12

# Harris Central Appraisal District



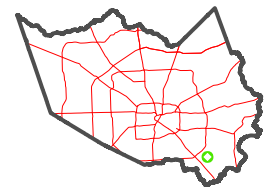
0 45 90 180  
Feet

PUBLICATION DATE:  
4/24/2023

Geospatial or map data maintained by the Harris Central Appraisal District is for informational purposes and may **not** have been prepared for or be suitable for legal, engineering, or surveying purposes. It does **not** represent an on-the-ground survey and only represents the approximate location of property boundaries.



### MAP LOCATION



## FACET 5951C8

2	3	4	1	2
6	7	8	5	6
10	11	12	9	10

5951D5