

5953C9

3B-1

Harris Central Appraisal District



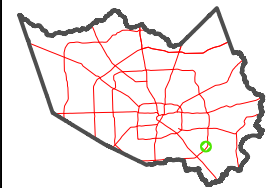
0 45 90 180 Feet

PUBLICATION DATE: 1/3/2023

Geospatial or map data maintained by the Harris Central Appraisal District is for informational purposes and may not have been prepared for or be suitable for legal, engineering, or surveying purposes. It does not represent an on-the-ground survey and only represents the approximate location of property boundaries.

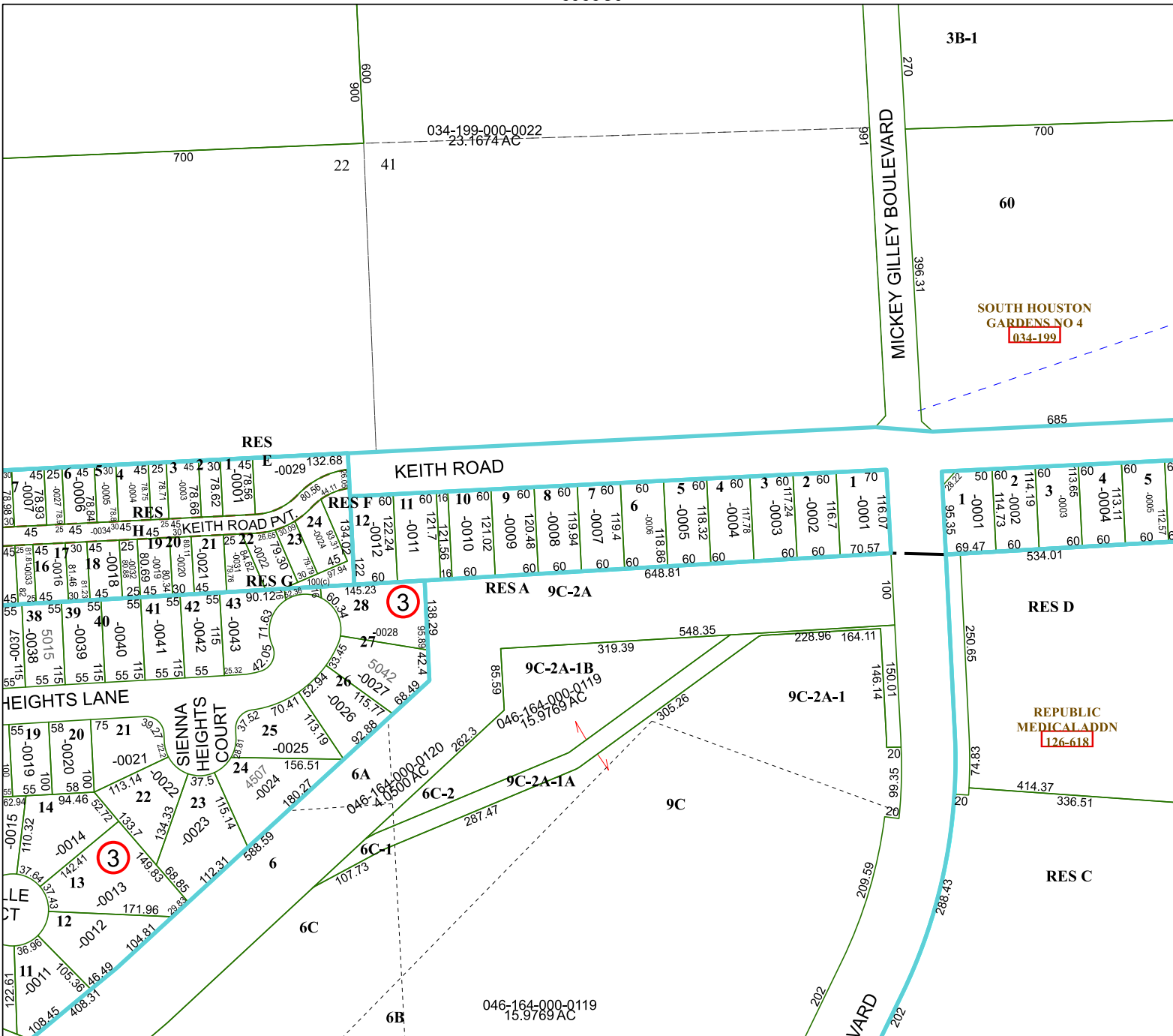


MAP LOCATION



FACET 5952A1

11	12	9	10	11
3	4	1	2	3
7	8	5	6	7



5952A5

SOUTH HOUSTON GARDENS NO 4
034-199

REPUBLIC MEDICAL ADDN
126-618

046-164-000-0119
15.9769 AC

5852B4

252565

034-199-000-0022
23.1674 AC