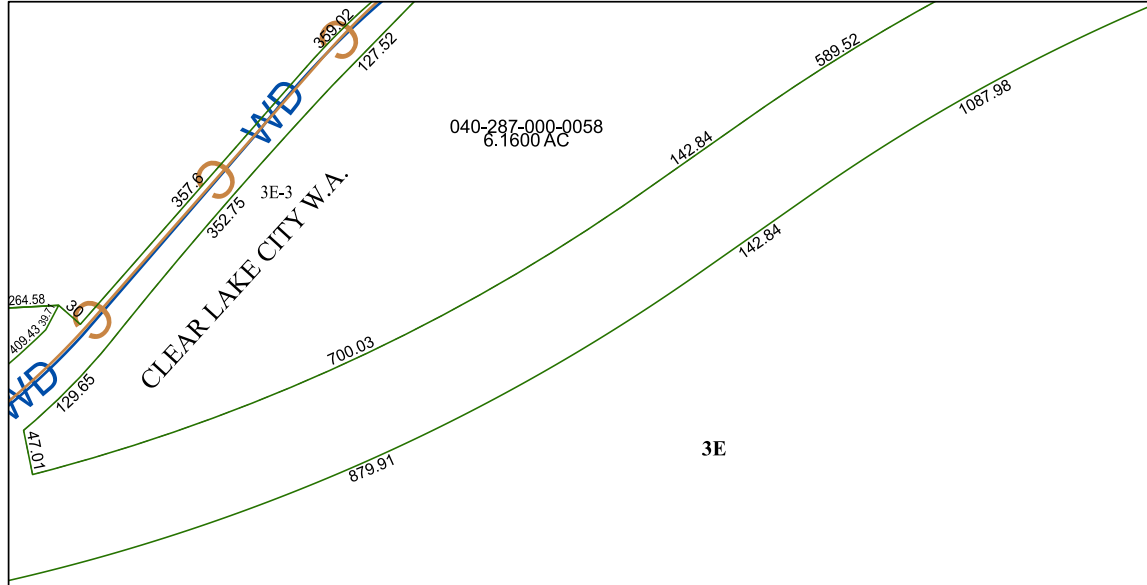


5952B10

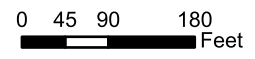


5952D1

3E

5952D6

Harris Central Appraisal District

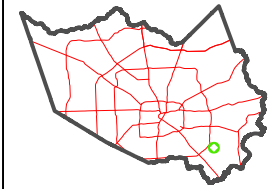


PUBLICATION DATE:
2/28/2024

Geospatial or map data maintained by the Harris Central Appraisal District is for informational purposes and may **not** have been prepared for or be suitable for legal, engineering, or surveying purposes. It does **not** represent an on-the-ground survey and only represents the approximate location of property boundaries.



MAP LOCATION



FACET

5952D2

12	9	10	11	12
4	1	2	3	4
8	5	6	7	8

5952D3