

Harris Central Appraisal District

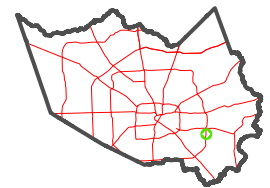


0 45 90 180 Feet

PUBLICATION DATE: 2/28/2024

Geospatial or map data maintained by the Harris Central Appraisal District is for informational purposes and may not have been prepared for or be suitable for legal, engineering, or surveying purposes. It does not represent an on-the-ground survey and only represents the approximate location of property boundaries.

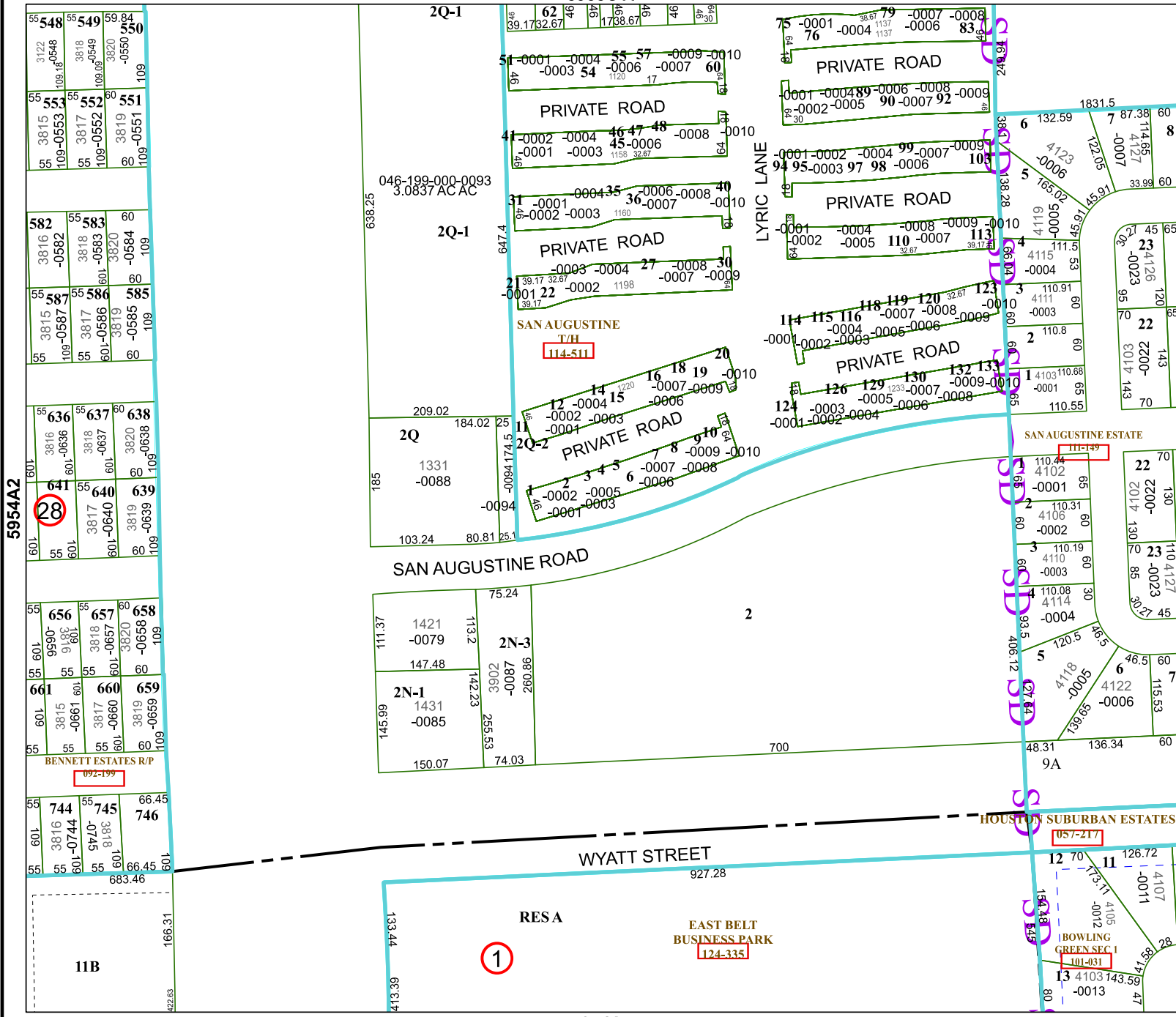
MAP LOCATION



FACET 5954A3

9	10	11	12	9
1	2	3	4	1
5	6	7	8	5

5955C11



5954A7

5954A2

5954A1

5954A3

5954A4

11B

1

