

Harris Central Appraisal District



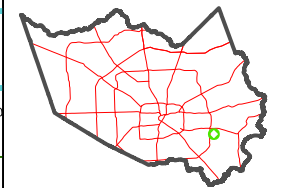
0 45 90 180 Feet

PUBLICATION DATE:
1/13/2025

Geospatial or map data maintained by the Harris Central Appraisal District is for informational purposes and may not have been prepared for or be suitable for legal, engineering, or surveying purposes. It does not represent an on-the-ground survey and only represents the approximate location of property boundaries.



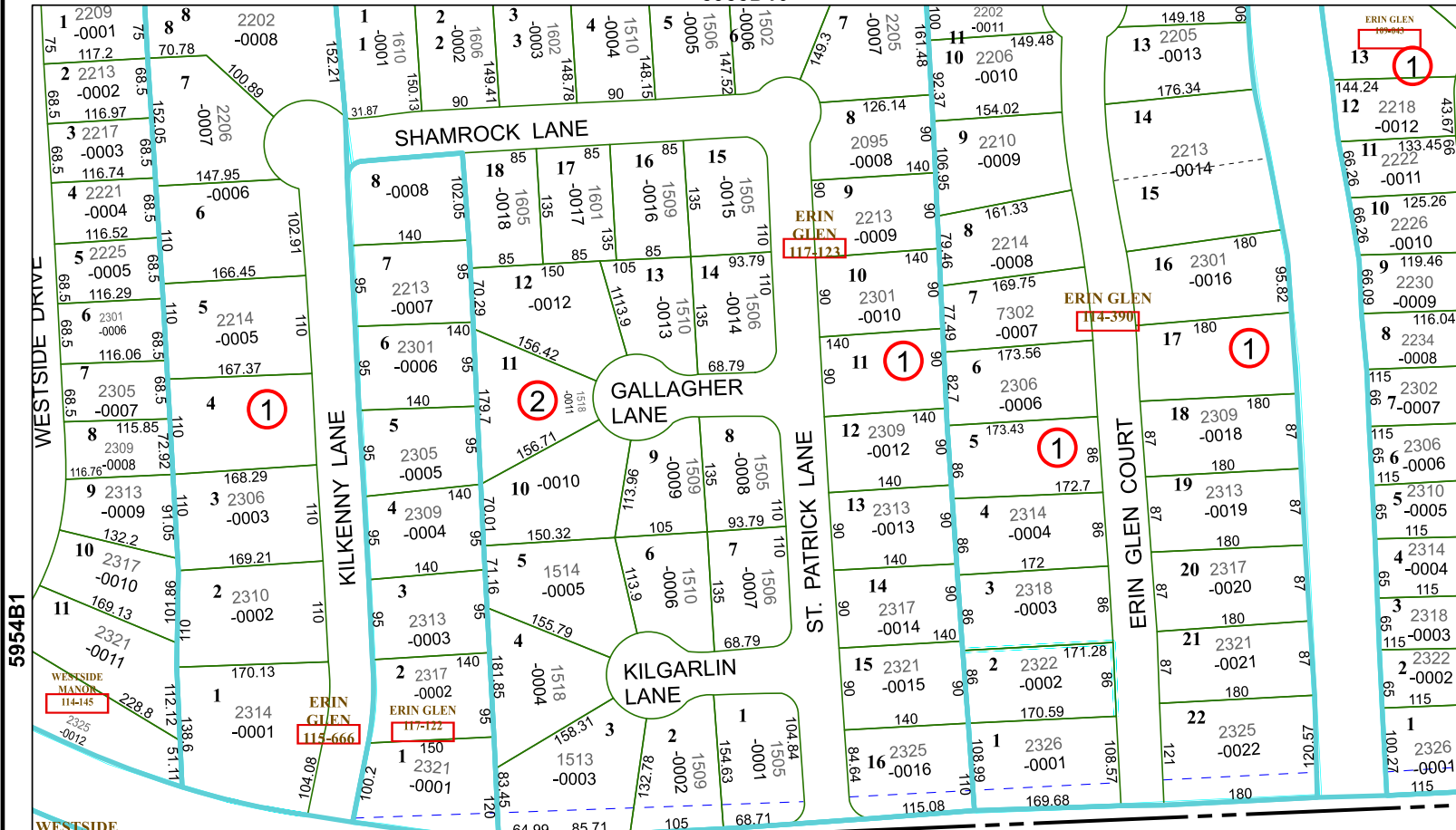
MAP LOCATION



FACET 5954B2

12	9	10	11	12
4	1	2	3	4
8	5	6	7	8

5955D10

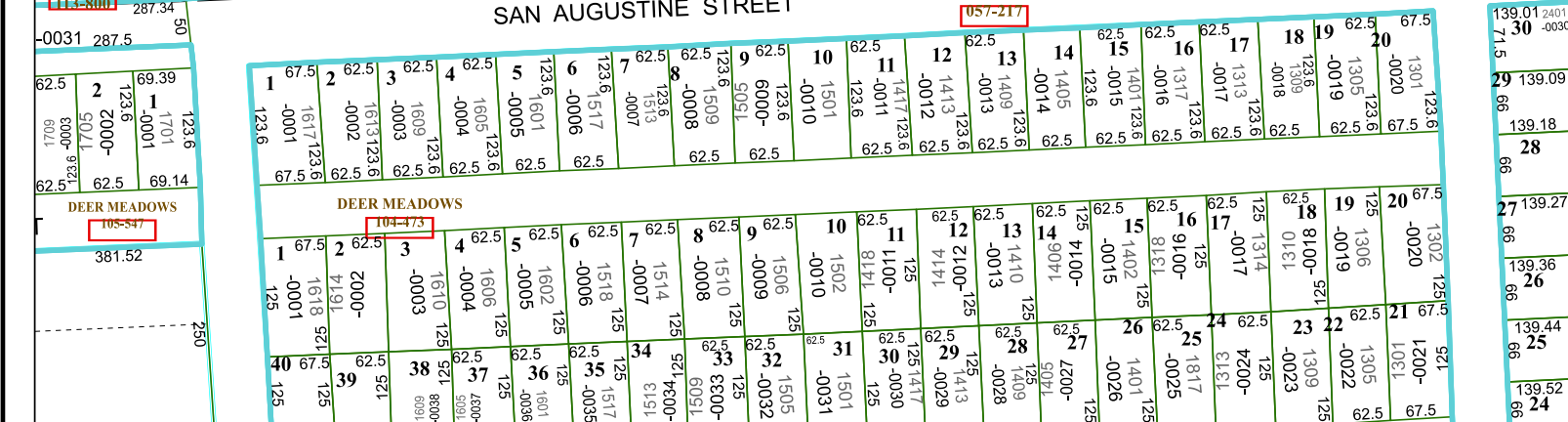


5954B1

5954B3

SAN AUGUSTINE STREET

HOUSTON SUBURBAN ESTATES



5954B6

