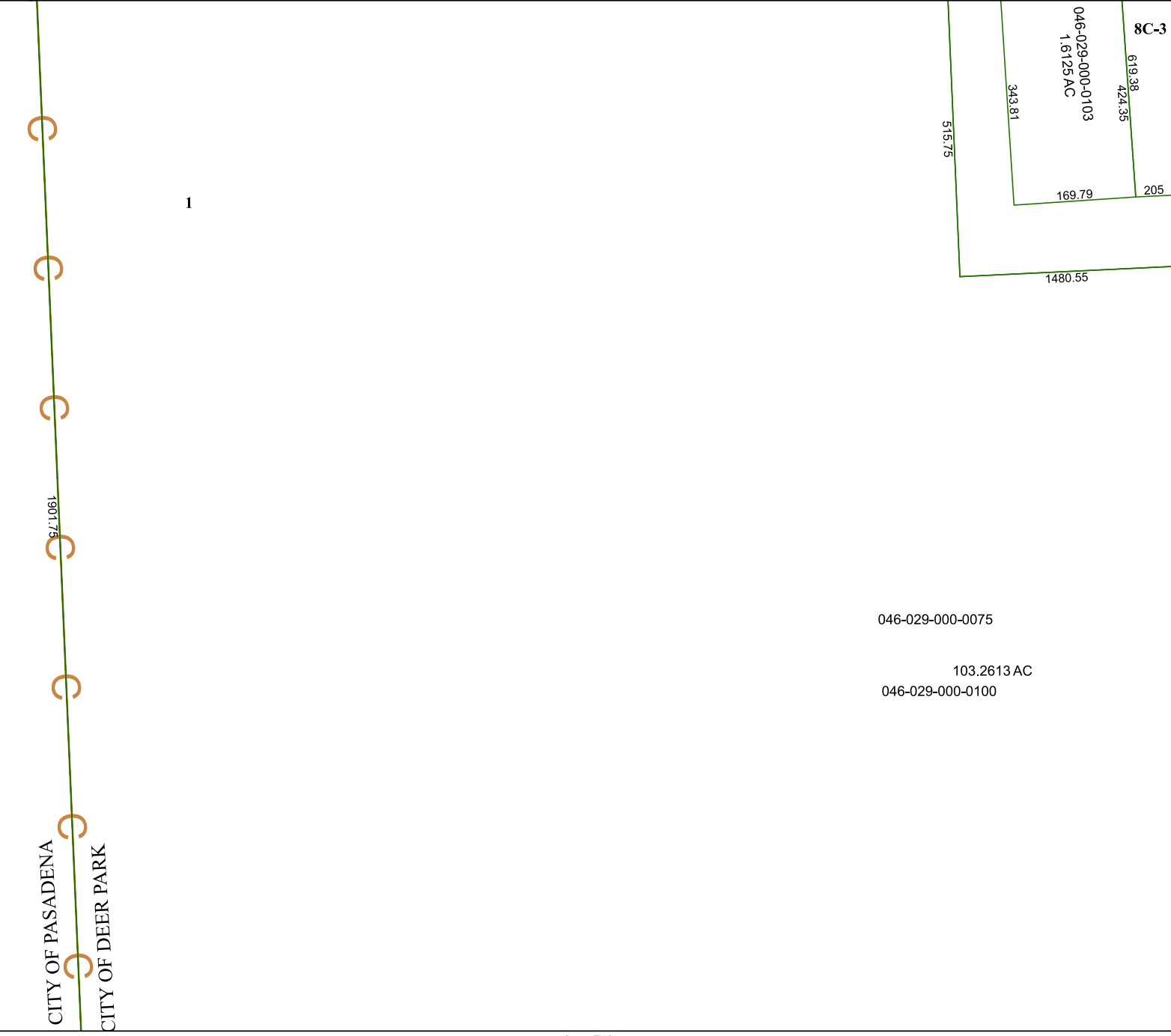


5955D1



5955C8

# Harris Central Appraisal District



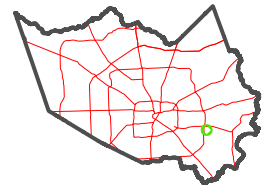
0 45 90 180  
Feet

PUBLICATION DATE:  
1/3/2023

Geospatial or map data maintained by the Harris Central Appraisal District is for informational purposes and may **not** have been prepared for or be suitable for legal, engineering, or surveying purposes. It does **not** represent an on-the-ground survey and only represents the approximate location of property boundaries.



### MAP LOCATION



## FACET

### 5955D5

3	4	1	2	3
7	8	5	6	7
11	12	9	10	11

5955D9