

5956C7

# Harris Central Appraisal District



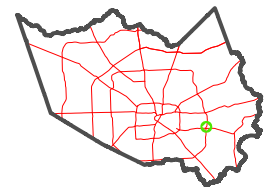
0 45 90 180 Feet

PUBLICATION DATE:  
12/30/2023

Geospatial or map data maintained by the Harris Central Appraisal District is for informational purposes and may not have been prepared for or be suitable for legal, engineering, or surveying purposes. It does not represent an on-the-ground survey and only represents the approximate location of property boundaries.



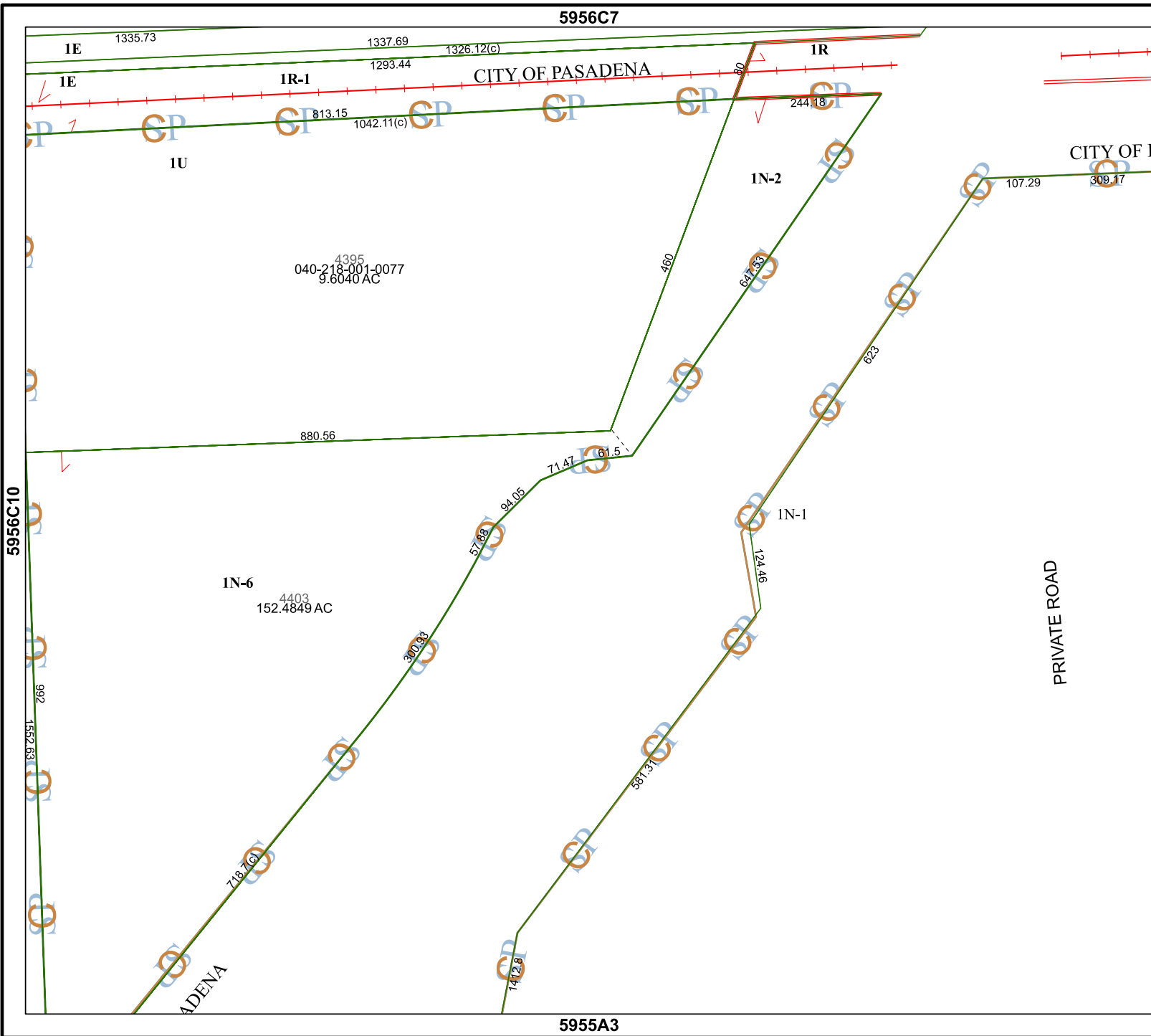
## MAP LOCATION



# FACET

## 5956C11

|   |    |    |    |   |
|---|----|----|----|---|
| 5 | 6  | 7  | 8  | 5 |
| 9 | 10 | 11 | 12 | 9 |
| 1 | 2  | 3  | 4  | 1 |



5955A3

PRIVATE ROAD

5956C12

5956C10

ADENA

CITY OF PASADENA

CITY OF I

1E

1335.73

1337.69

1293.44

1326.12(C)

1R

1E

1R-1

813.15

1042.11(c)

244.18

1U

1N-2

107.29

309.17

040-218-001-0077  
9.6040 AC

4395

9.6040 AC

880.56

71.47

161.5

94.05

57.68

1N-1

124.46

1N-6

4403  
152.4849 AC

300.33

992

1552.63

718.70

581.37

1412.8