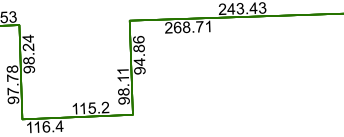
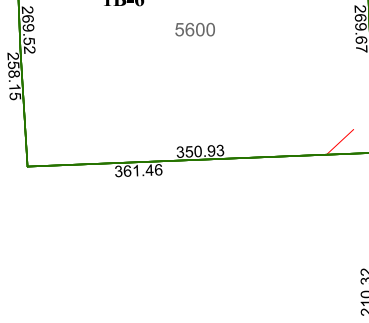
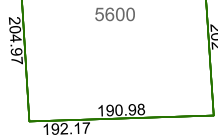


5956D7

1B-7

1B-6

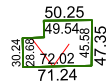


799.87 806.29

1B-5

447.1 462.95

838.87 857.65 28.97 37.24



1B-1

1B-4

1B-2
-0016

5955B3

5956D10

Harris Central Appraisal District



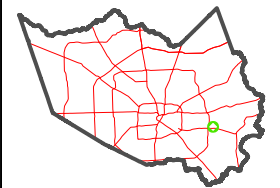
0 45 90 180 Feet

PUBLICATION DATE:
12/30/2023

Geospatial or map data maintained by the Harris Central Appraisal District is for informational purposes and may **not** have been prepared for or be suitable for legal, engineering, or surveying purposes. It does **not** represent an on-the-ground survey and only represents the approximate location of property boundaries.



MAP LOCATION



FACET

5956D11

5	6	7	8	5
9	10	11	12	9
1	2	3	4	1