

5956B12

1A

1A-1

Harris Central Appraisal District



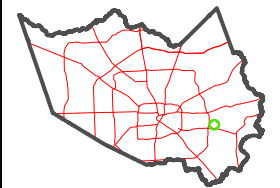
0 45 90 180 Feet

PUBLICATION DATE:
12/30/2023

Geospatial or map data maintained by the Harris Central Appraisal District is for informational purposes and may **not** have been prepared for or be suitable for legal, engineering, or surveying purposes. It does **not** represent an on-the-ground survey and only represents the approximate location of property boundaries.



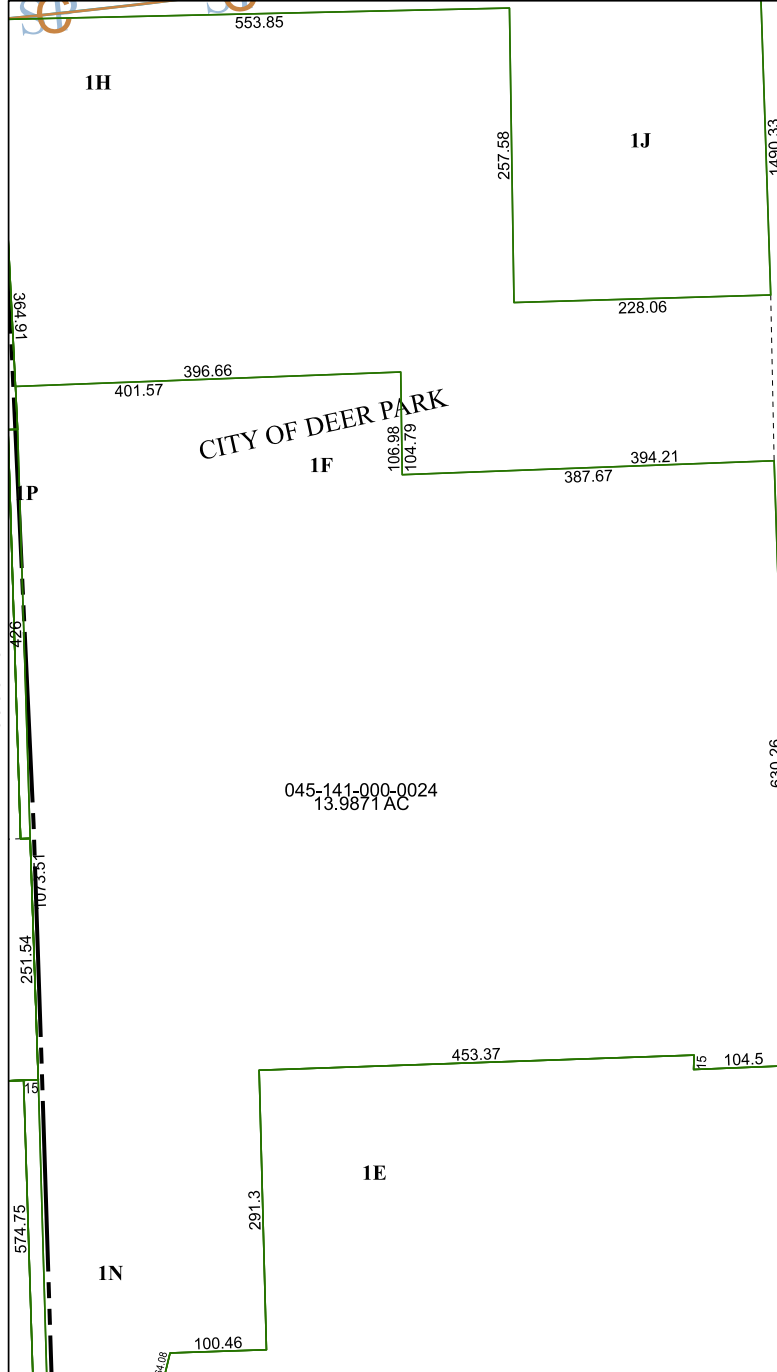
MAP LOCATION



FACET 5956D4

10	11	12	9	10
2	3	4	1	2
6	7	8	5	6

5956D8



CITY OF DEER PARK

045-141-000-0024
13.9871 AC

5956D3

6056C1

1B-1

1N

1E

1H

1J

1G

1P