

Harris Central Appraisal District



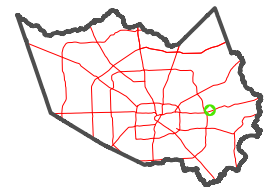
0 45 90 180 Feet

PUBLICATION DATE: 1/3/2023

Geospatial or map data maintained by the Harris Central Appraisal District is for informational purposes and may not have been prepared for or be suitable for legal, engineering, or surveying purposes. It does not represent an on-the-ground survey and only represents the approximate location of property boundaries.



MAP LOCATION

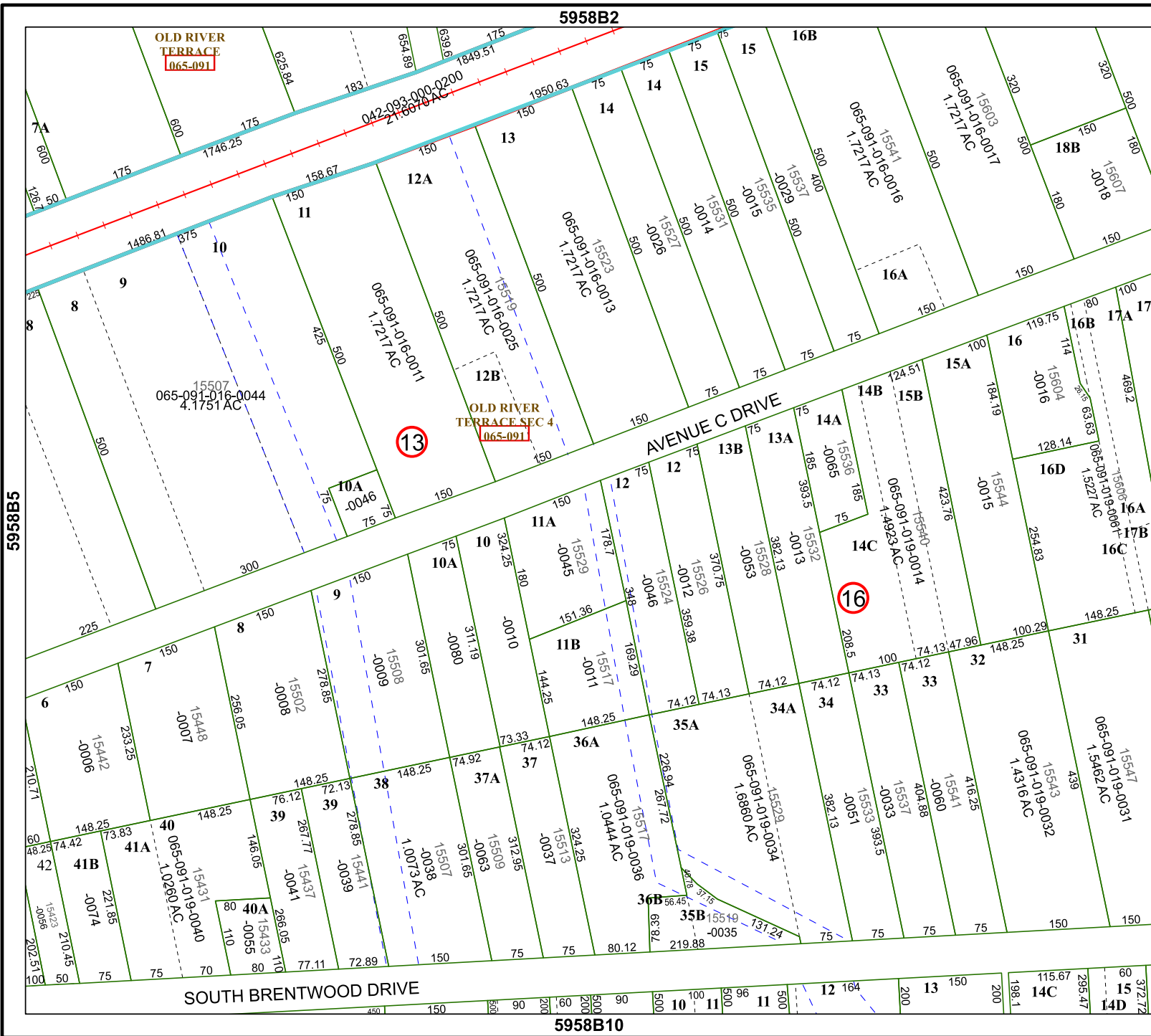


FACET 5958B6

4	1	2	3	4
8	5	6	7	8
12	9	10	11	12

5958B2

5958B10



5958B5

5958B7

5958B9

5958B11

5958B12

5958B13

5958B14

5958B15

5958B16