

# Harris Central Appraisal District

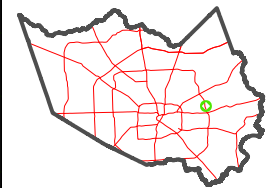


0 45 90 180 Feet

PUBLICATION DATE: 1/3/2023

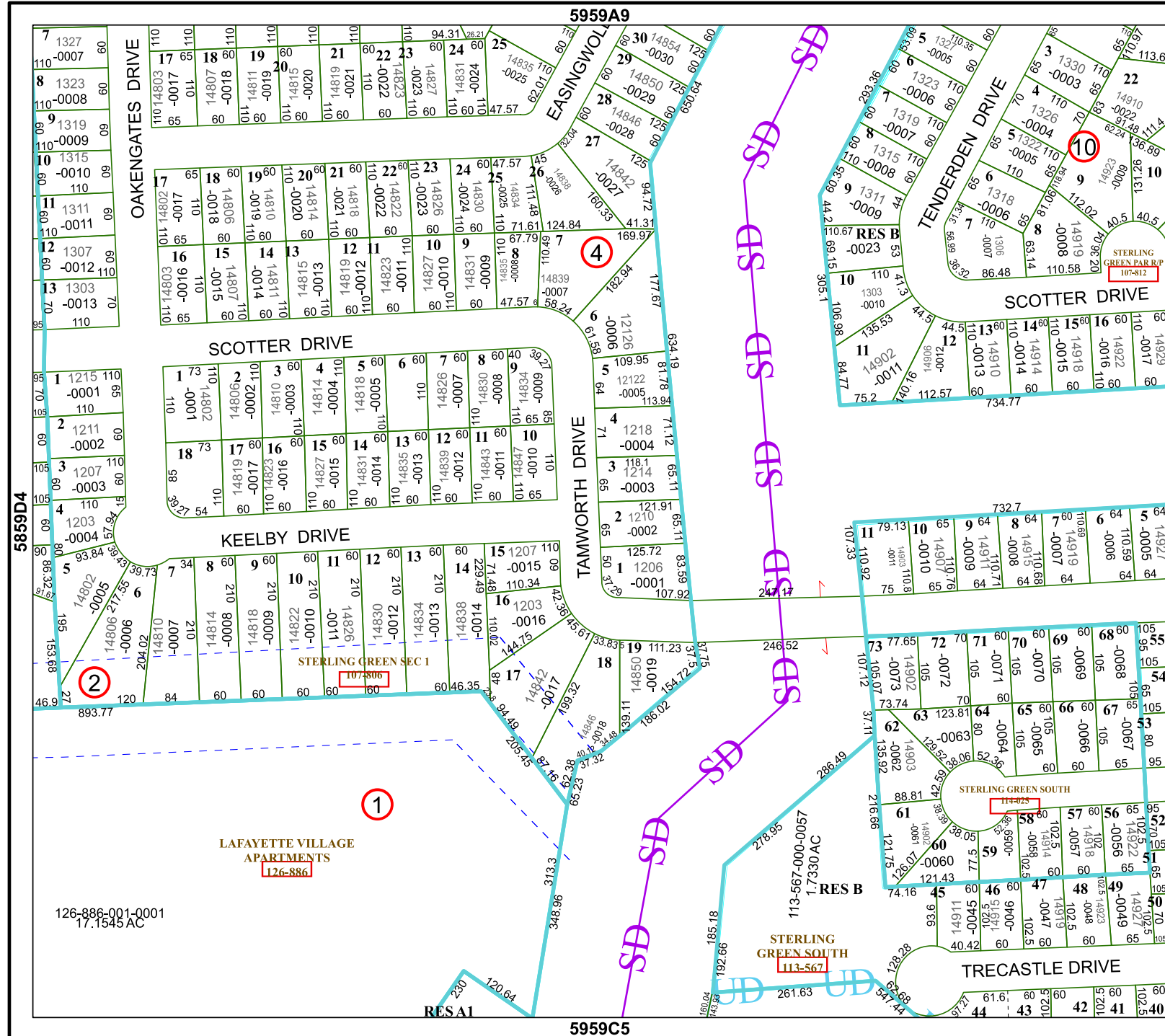
Geospatial or map data maintained by the Harris Central Appraisal District is for informational purposes and may not have been prepared for or be suitable for legal, engineering, or surveying purposes. It does not represent an on-the-ground survey and only represents the approximate location of property boundaries.

MAP LOCATION



## FACET 5959C1

11	12	9	10	11
3	4	1	2	3
7	8	5	6	7



5959A9

4

10

1

LAFAYETTE VILLAGE APARTMENTS  
126-886

126-886-001-0001  
17.1545 AC

5959C5

5859D4

26656C