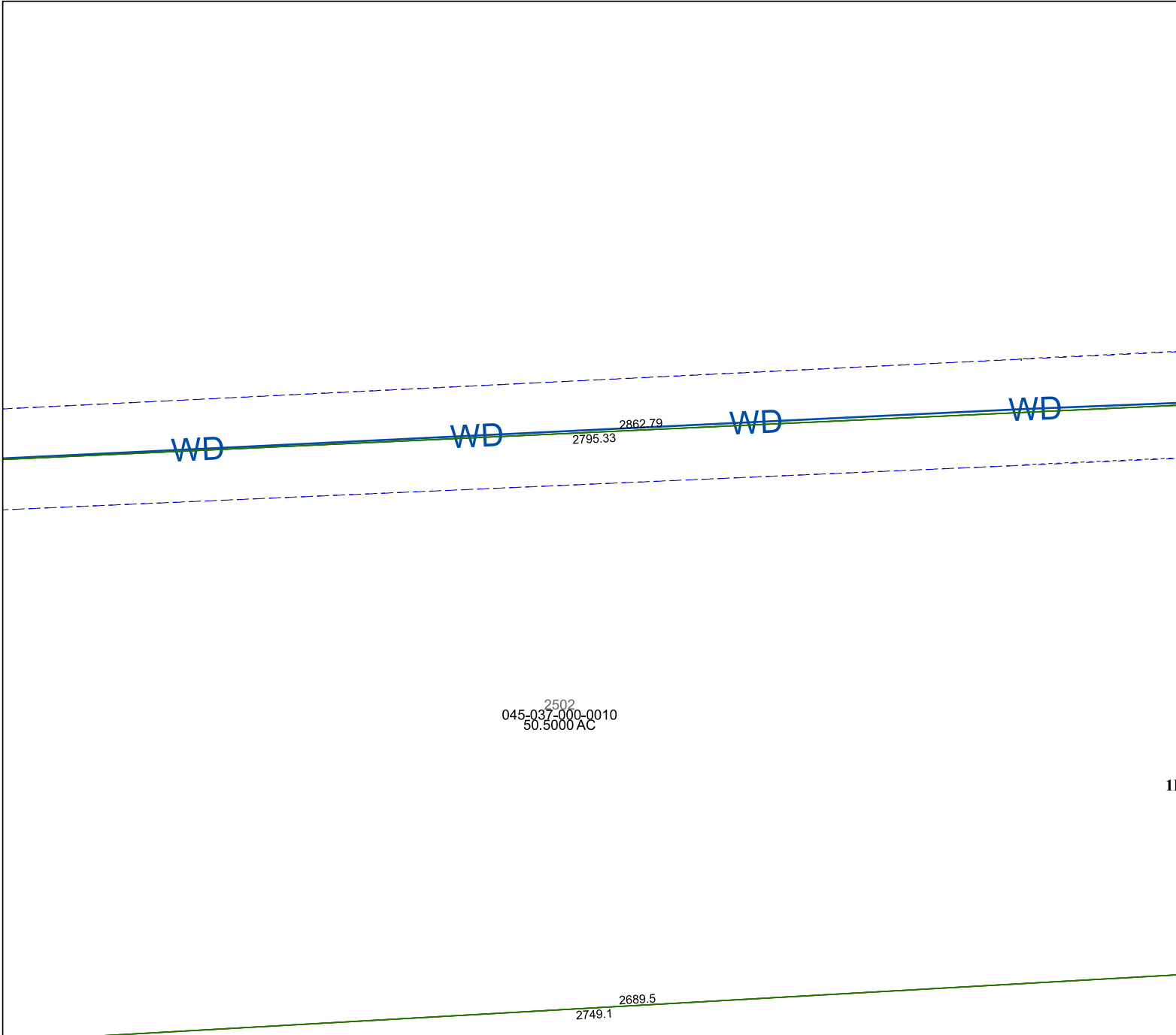


5960D4

5960D7



5960D12

Harris Central Appraisal District



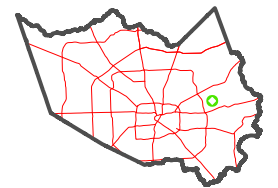
0 45 90 180 Feet

PUBLICATION DATE:
1/3/2023

Geospatial or map data maintained by the Harris Central Appraisal District is for informational purposes and may **not** have been prepared for or be suitable for legal, engineering, or surveying purposes. It does **not** represent an on-the-ground survey and only represents the approximate location of property boundaries.



MAP LOCATION



1F

FACET 5960D8

2	3	4	1	2
6	7	8	5	6
10	11	12	9	10