

5962A1

Harris Central Appraisal District



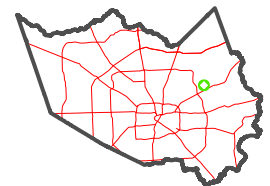
0 45 90 180 Feet

PUBLICATION DATE:
1/3/2023

Geospatial or map data maintained by the Harris Central Appraisal District is for informational purposes and may not have been prepared for or be suitable for legal, engineering, or surveying purposes. It does not represent an on-the-ground survey and only represents the approximate location of property boundaries.



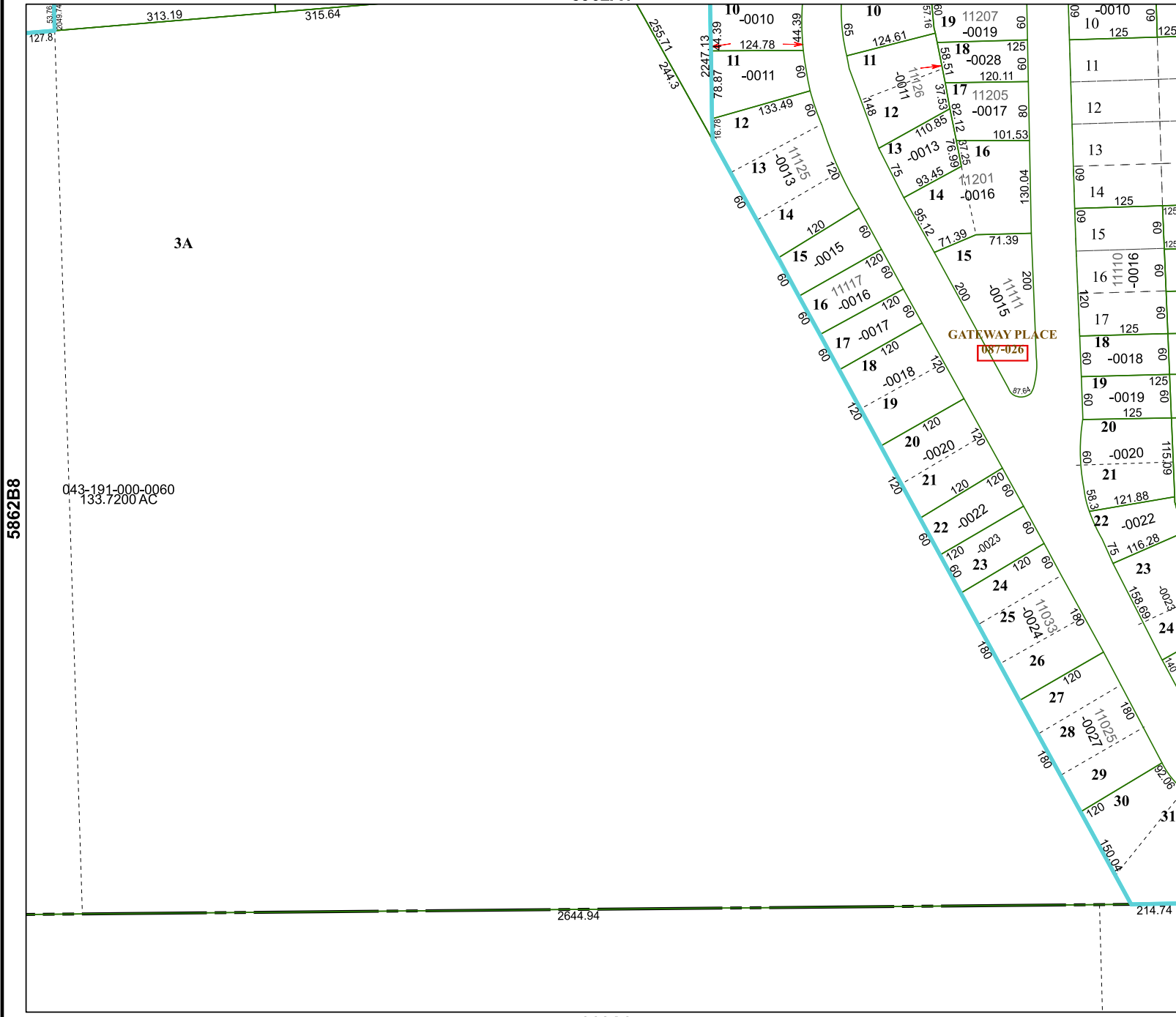
MAP LOCATION



FACET 5962A5

3	4	1	2	3
7	8	5	6	7
11	12	9	10	11

5962A9



3A

043-191-000-0060
133.7200 AC

5862B8

5962A6