

5962B3

5962B6

Harris Central Appraisal District



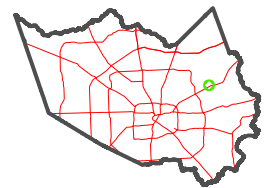
0 45 90 180
Feet

PUBLICATION DATE:
12/30/2023

Geospatial or map data maintained by the Harris Central Appraisal District is for informational purposes and may **not** have been prepared for or be suitable for legal, engineering, or surveying purposes. It does **not** represent an on-the-ground survey and only represents the approximate location of property boundaries.

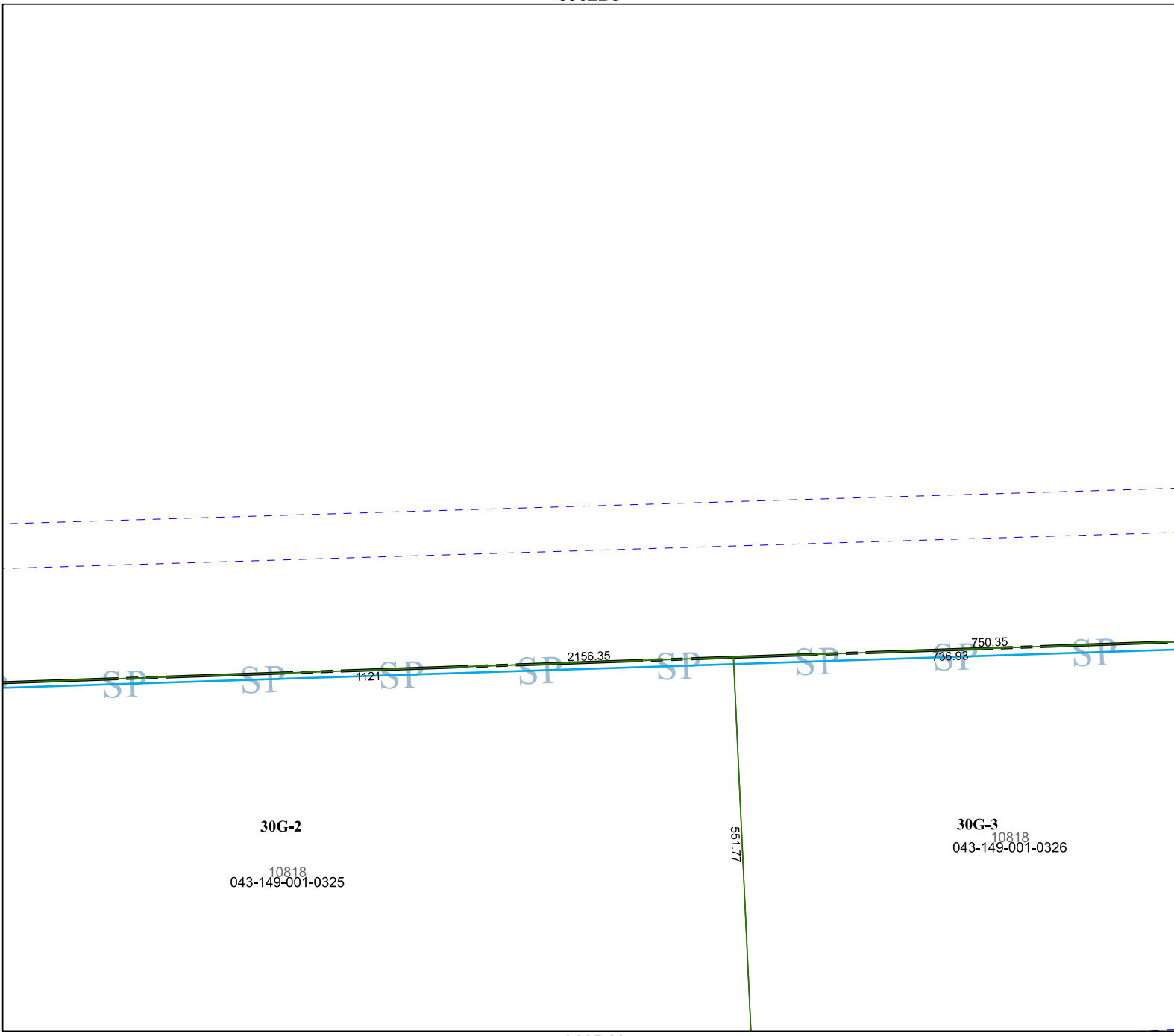


MAP LOCATION



FACET 5962B7

1	2	3	4	1
5	6	7	8	5
9	10	11	12	9



30G-2
10818
043-149-001-0325

30G-3
10818
043-149-001-0326

5962B11