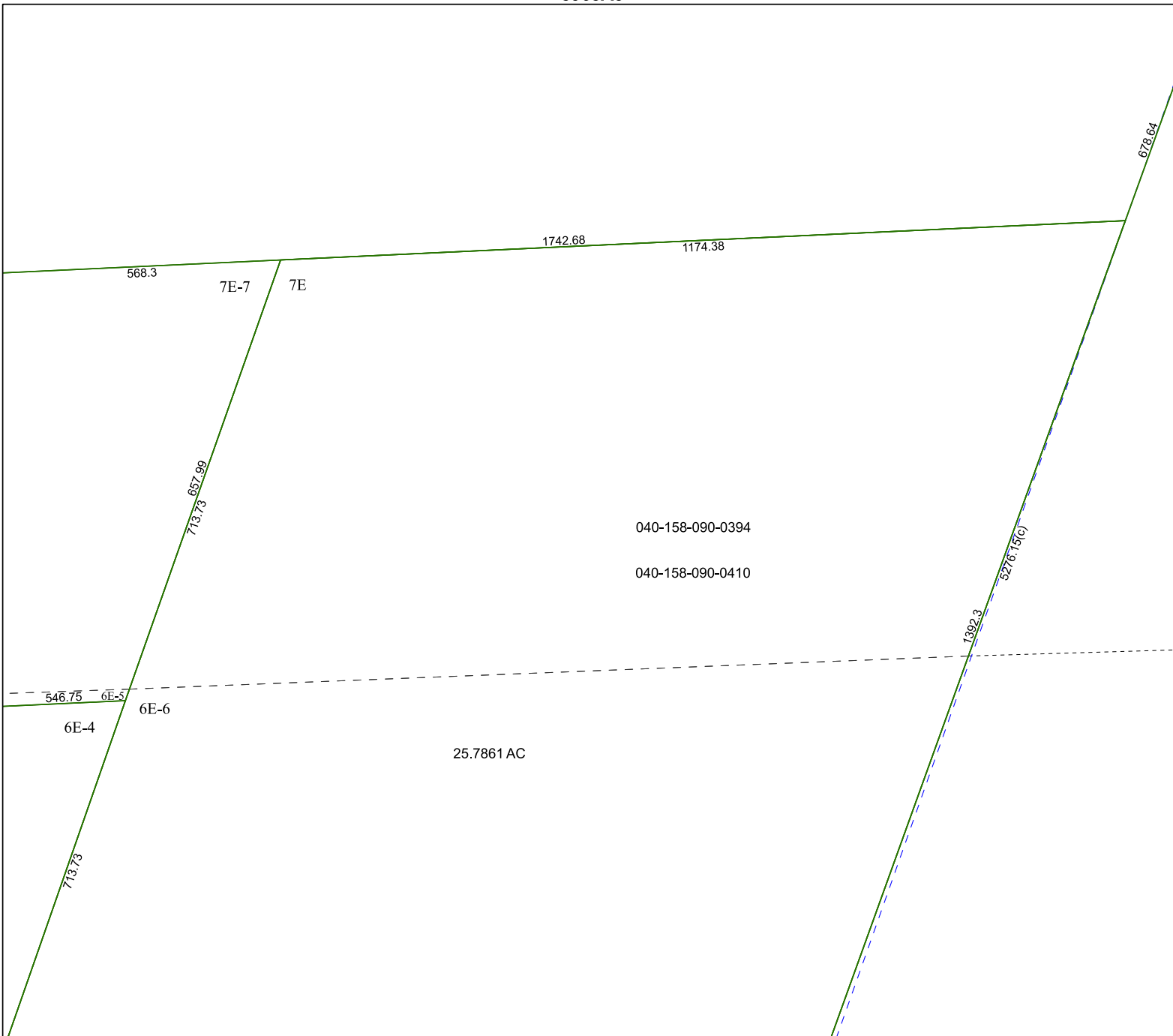


5963A3

5963A6

5963A11



# Harris Central Appraisal District



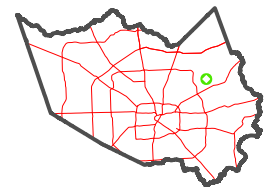
0 45 90 180 Feet

PUBLICATION DATE:  
1/3/2023

Geospatial or map data maintained by the Harris Central Appraisal District is for informational purposes and may **not** have been prepared for or be suitable for legal, engineering, or surveying purposes. It does **not** represent an on-the-ground survey and only represents the approximate location of property boundaries.



### MAP LOCATION



## FACET 5963A7

1	2	3	4	1
5	6	7	8	5
9	10	11	12	9