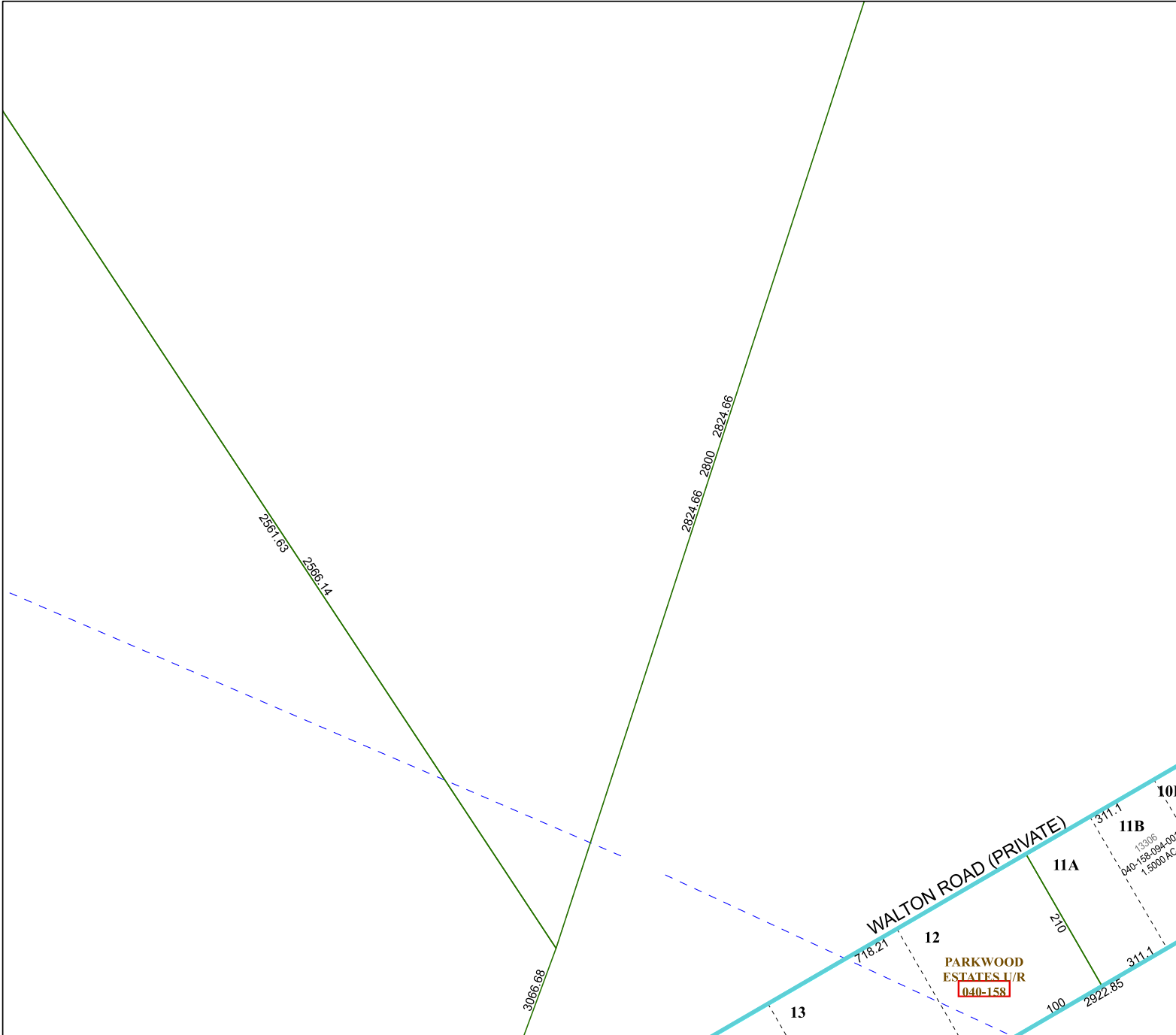


5964C2

5964C5



5964C10

Harris Central Appraisal District



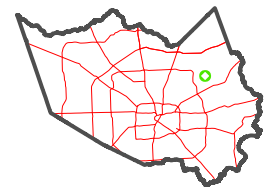
0 45 90 180 Feet

PUBLICATION DATE:
12/30/2023

Geospatial or map data maintained by the Harris Central Appraisal District is for informational purposes and may **not** have been prepared for or be suitable for legal, engineering, or surveying purposes. It does **not** represent an on-the-ground survey and only represents the approximate location of property boundaries.



MAP LOCATION



FACET 5964C6

| | | | | |
|----|---|----|----|----|
| 4 | 1 | 2 | 3 | 4 |
| 8 | 5 | 6 | 7 | 8 |
| 12 | 9 | 10 | 11 | 12 |

5964C7