

# Harris Central Appraisal District



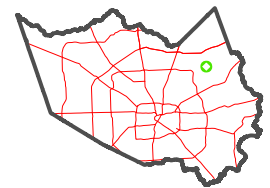
0 45 90 180 Feet

PUBLICATION DATE:  
4/22/2024

Geospatial or map data maintained by the Harris Central Appraisal District is for informational purposes and may not have been prepared for or be suitable for legal, engineering, or surveying purposes. It does not represent an on-the-ground survey and only represents the approximate location of property boundaries.



MAP LOCATION



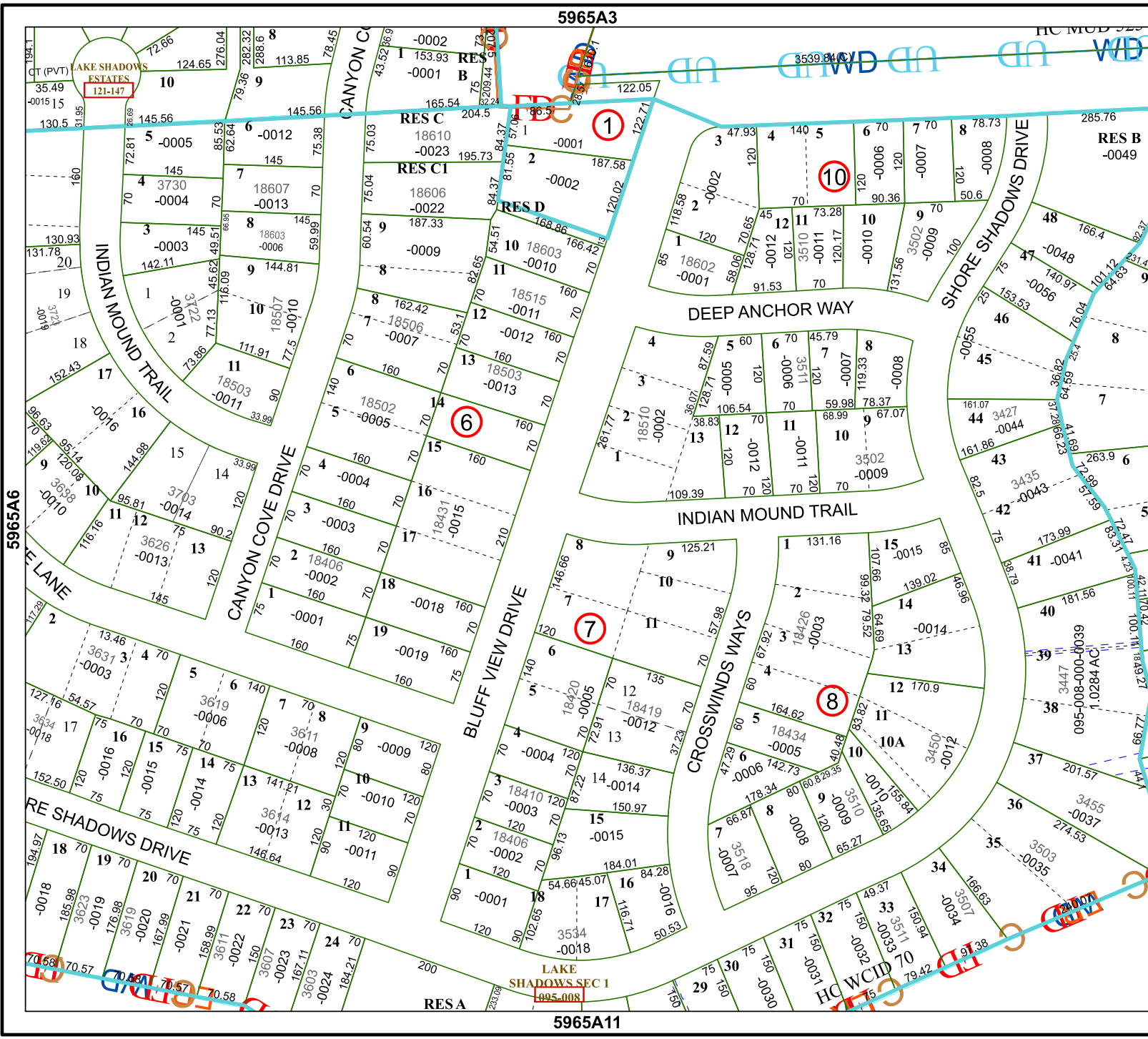
## FACET

### 5965A7

1	2	3	4	1
5	6	7	8	5
9	10	11	12	9

5965A3

5965A11



5965A6

5965A8

LAKE SHADOWS ESTATES 121-147

LAKE SHADOWS SEC 1 095-008

RESA

HC WCID 75

HC MOD 75