

Harris Central Appraisal District



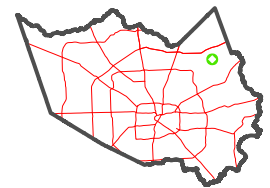
0 45 90 180 Feet

PUBLICATION DATE:
2/13/2024

Geospatial or map data maintained by the Harris Central Appraisal District is for informational purposes and may not have been prepared for or be suitable for legal, engineering, or surveying purposes. It does not represent an on-the-ground survey and only represents the approximate location of property boundaries.



MAP LOCATION



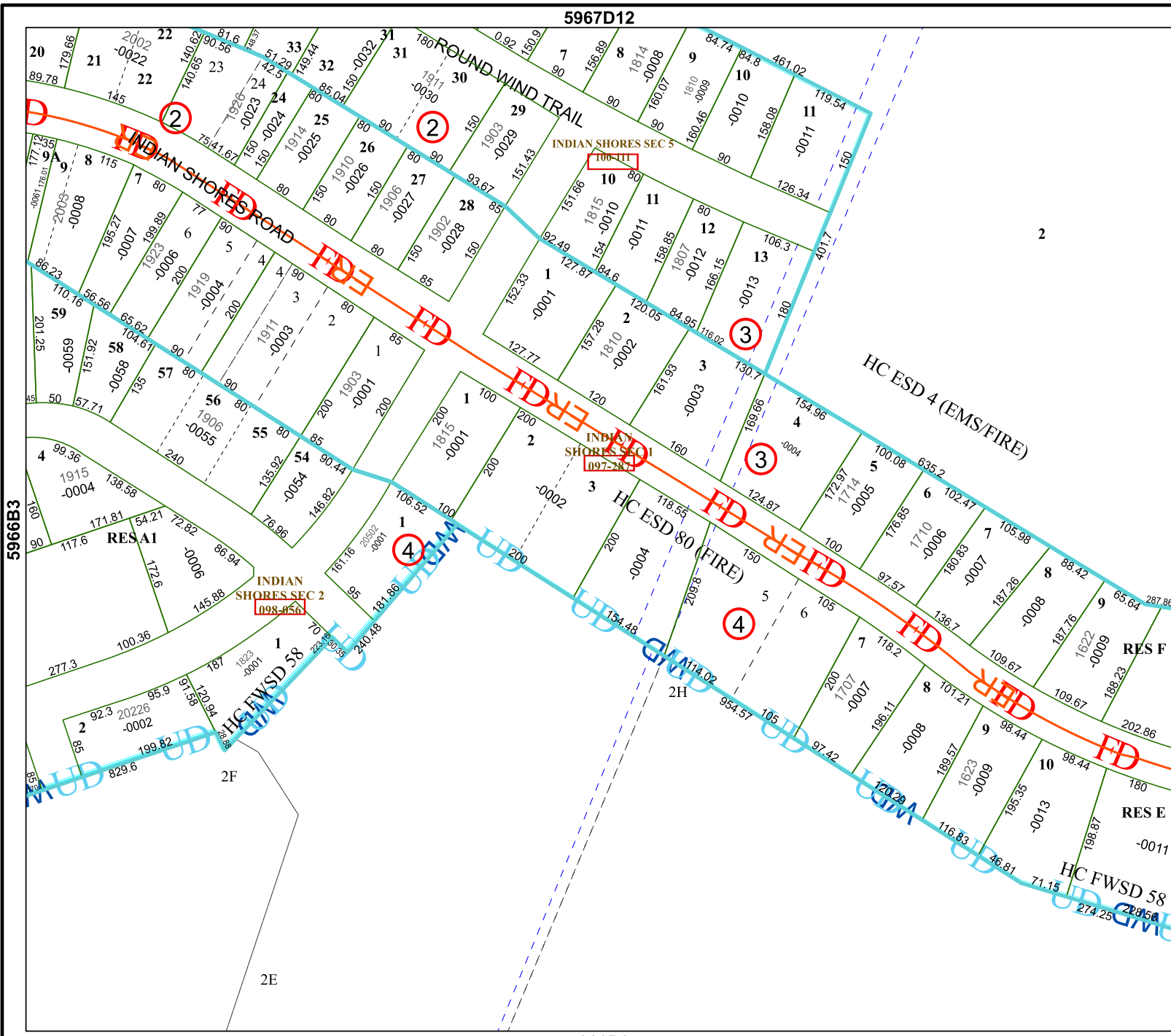
FACET

5966B4

10	11	12	9	10
2	3	4	1	2
6	7	8	5	6

5967D12

5966B8



2

6066A1

5966B3