

# Harris Central Appraisal District

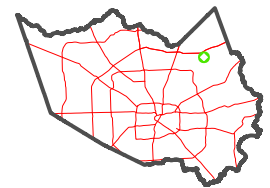


0 45 90 180 Feet

PUBLICATION DATE:  
12/30/2023

Geospatial or map data maintained by the Harris Central Appraisal District is for informational purposes and may not have been prepared for or be suitable for legal, engineering, or surveying purposes. It does not represent an on-the-ground survey and only represents the approximate location of property boundaries.

MAP LOCATION



## FACET 5967C5

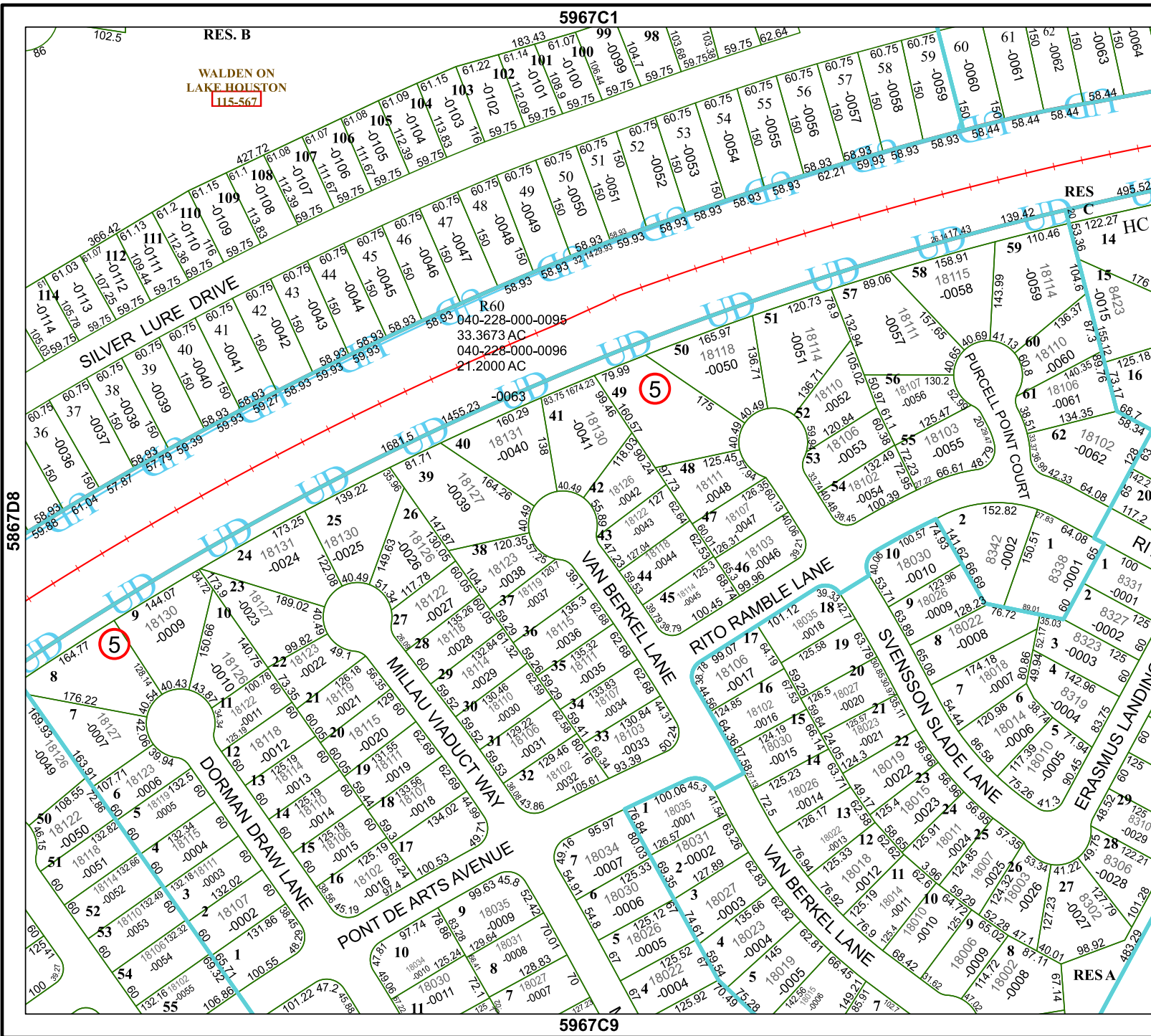
3	4	1	2	3
7	8	5	6	7
11	12	9	10	11

5967C1

RES. B

WALDEN ON LAKE HOUSTON  
[115-567]

5967C9



5867D8

5967C6

RESA