

5971A1

5971A9

Harris Central Appraisal District

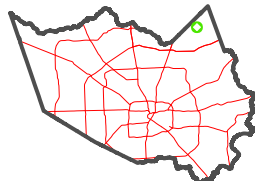


0 45 90 180 Feet

PUBLICATION DATE: 5/30/2024

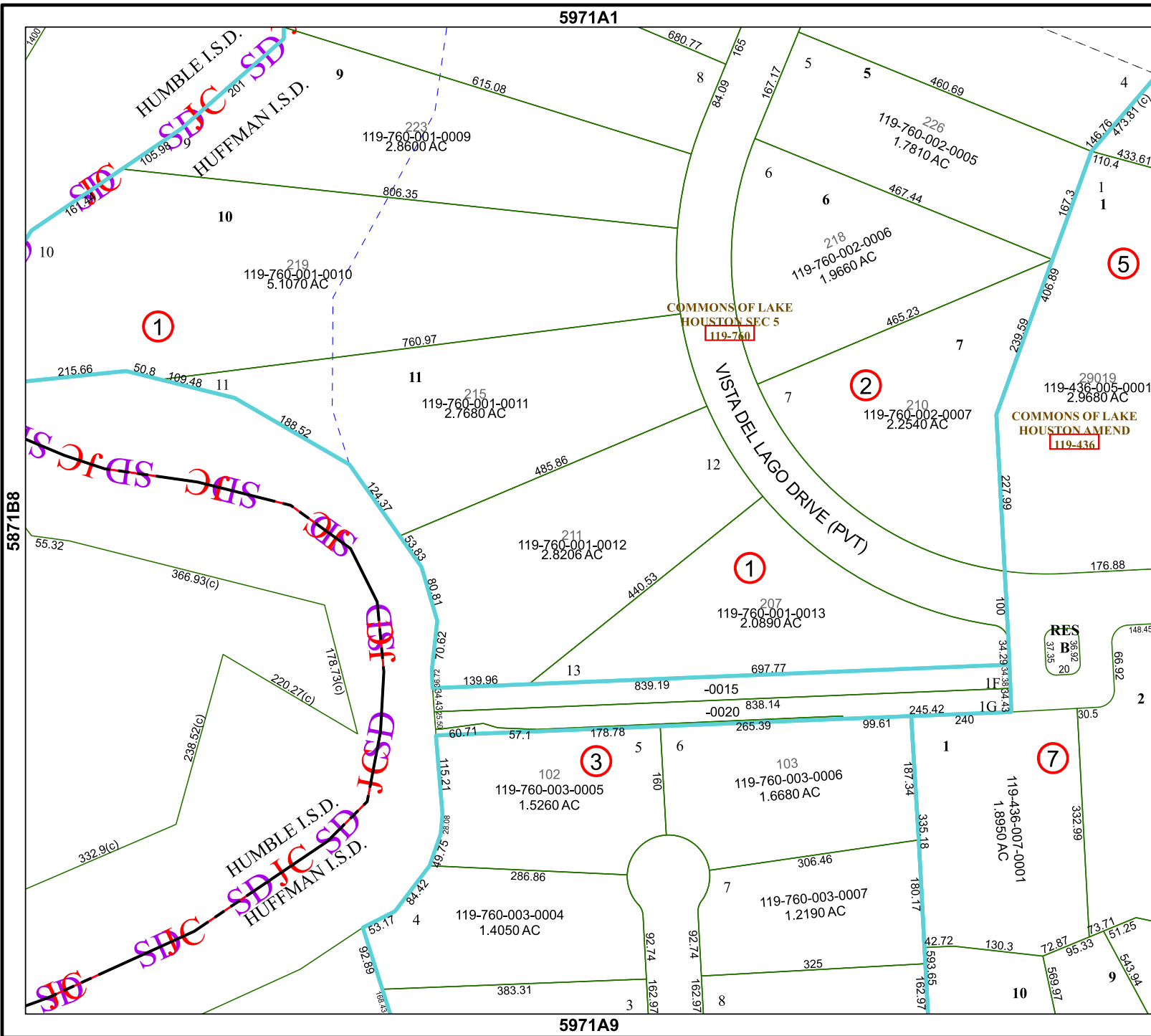
Geospatial or map data maintained by the Harris Central Appraisal District is for informational purposes and may not have been prepared for or be suitable for legal, engineering, or surveying purposes. It does not represent an on-the-ground survey and only represents the approximate location of property boundaries.

MAP LOCATION



FACET 5971A5

3	4	1	2	3
7	8	5	6	7
11	12	9	10	11



HUMBLE I.S.D.
SDJC SD

HUFFMAN I.S.D.

HUMBLE I.S.D.
SDJC SD

HUFFMAN I.S.D.

COMMONS OF LAKE HOUSTON SEC 5

COMMONS OF LAKE HOUSTON AMEND

RES B

5871B8

5971A6

