

5971A2

5971A5

Harris Central Appraisal District



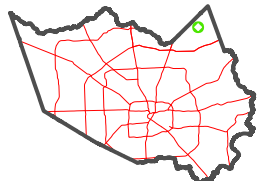
0 45 90 180 Feet

PUBLICATION DATE:
12/30/2023

Geospatial or map data maintained by the Harris Central Appraisal District is for informational purposes and may not have been prepared for or be suitable for legal, engineering, or surveying purposes. It does not represent an on-the-ground survey and only represents the approximate location of property boundaries.

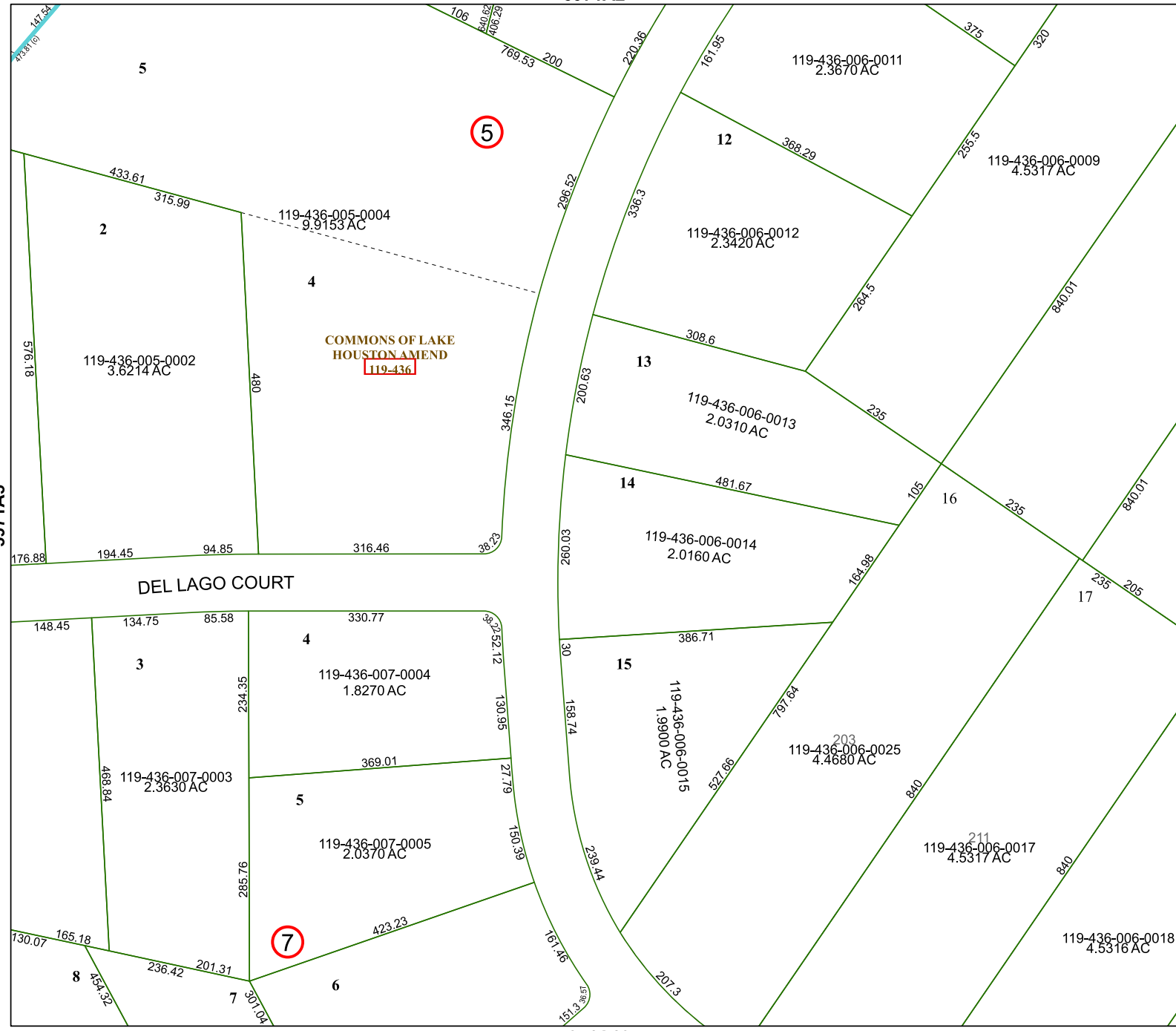


MAP LOCATION



FACET 5971A6

| | | | | |
|----|---|----|----|----|
| 4 | 1 | 2 | 3 | 4 |
| 8 | 5 | 6 | 7 | 8 |
| 12 | 9 | 10 | 11 | 12 |



COMMONS OF LAKE HOUSTON AMEND
119-436

5971A10