

5971C8

WATER PLANT

RESERVE OF THE COMMONS  
LAKE HOUSTON AMEND 1  
124-329

COMMONS OF LAKE  
HOUSTON SEC 2  
118-770

RES B

# Harris Central Appraisal District



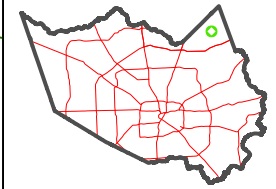
0 45 90 180 Feet

PUBLICATION DATE:  
1/10/2023

Geospatial or map data maintained by the Harris Central Appraisal District is for informational purposes and may not have been prepared for or be suitable for legal, engineering, or surveying purposes. It does not represent an on-the-ground survey and only represents the approximate location of property boundaries.



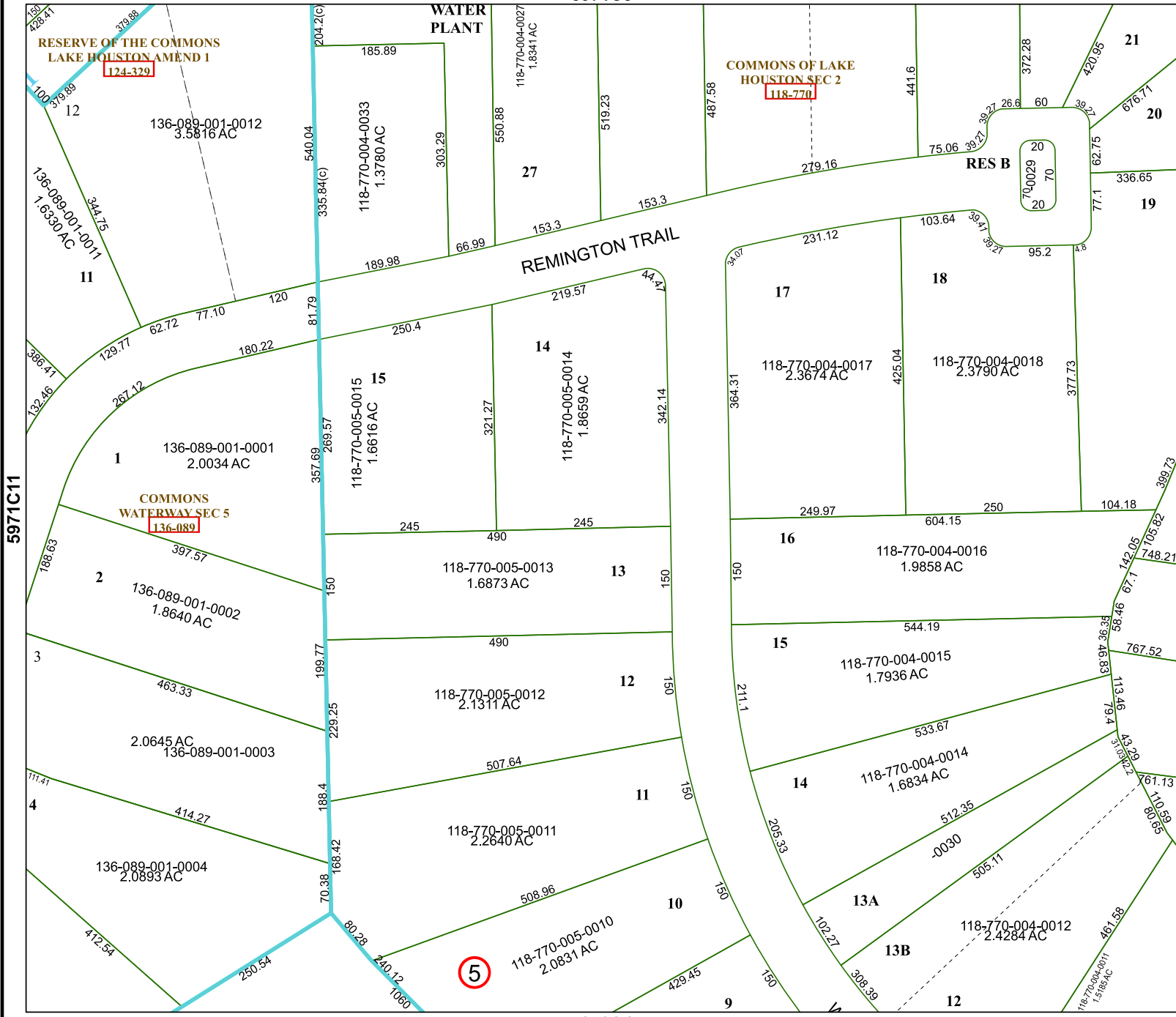
MAP LOCATION



## FACET 5971C12

6	7	8	5	6
10	11	12	9	10
2	3	4	1	2

5971C11



5970A4

5971D9