

5971A12

5971C3

Harris Central Appraisal District



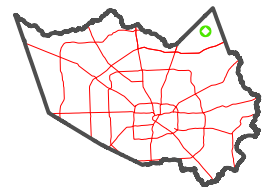
0 45 90 180 Feet

PUBLICATION DATE: 1/4/2023

Geospatial or map data maintained by the Harris Central Appraisal District is for informational purposes and may not have been prepared for or be suitable for legal, engineering, or surveying purposes. It does not represent an on-the-ground survey and only represents the approximate location of property boundaries.



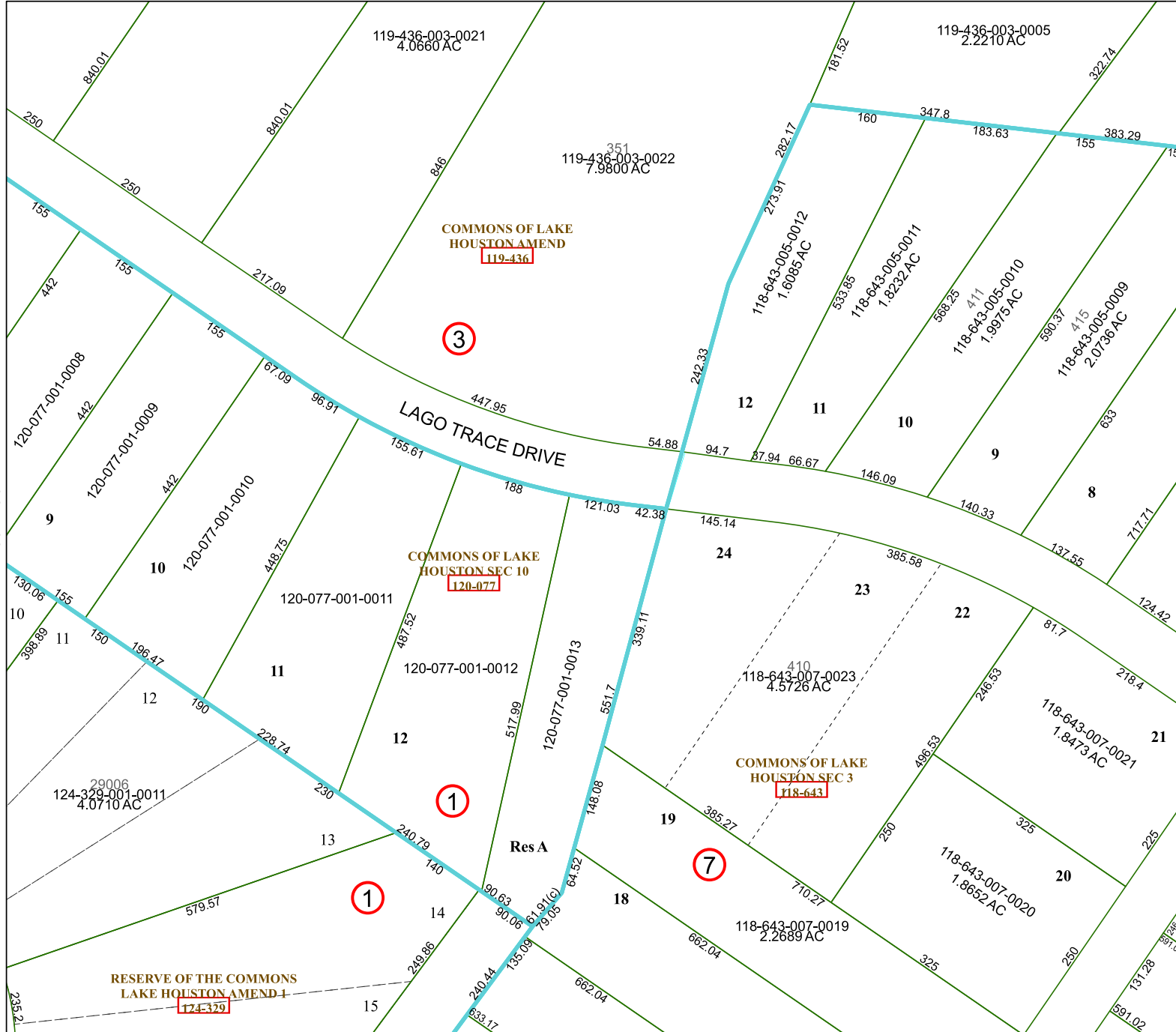
MAP LOCATION



FACET 5971C4

10	11	12	9	10
2	3	4	1	2
6	7	8	5	6

5971C8



COMMONS OF LAKE HOUSTON AMEND
119-436

3

COMMONS OF LAKE HOUSTON SEC 10
120-077

1

COMMONS OF LAKE HOUSTON SEC 3
118-643

7

RESERVE OF THE COMMONS LAKE HOUSTON AMEND 1
124-329

1

Res A