

5971D8

5970B4

Harris Central Appraisal District

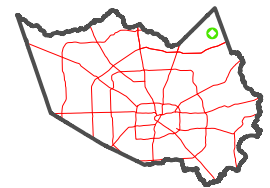


0 45 90 180 Feet

PUBLICATION DATE: 1/22/2024

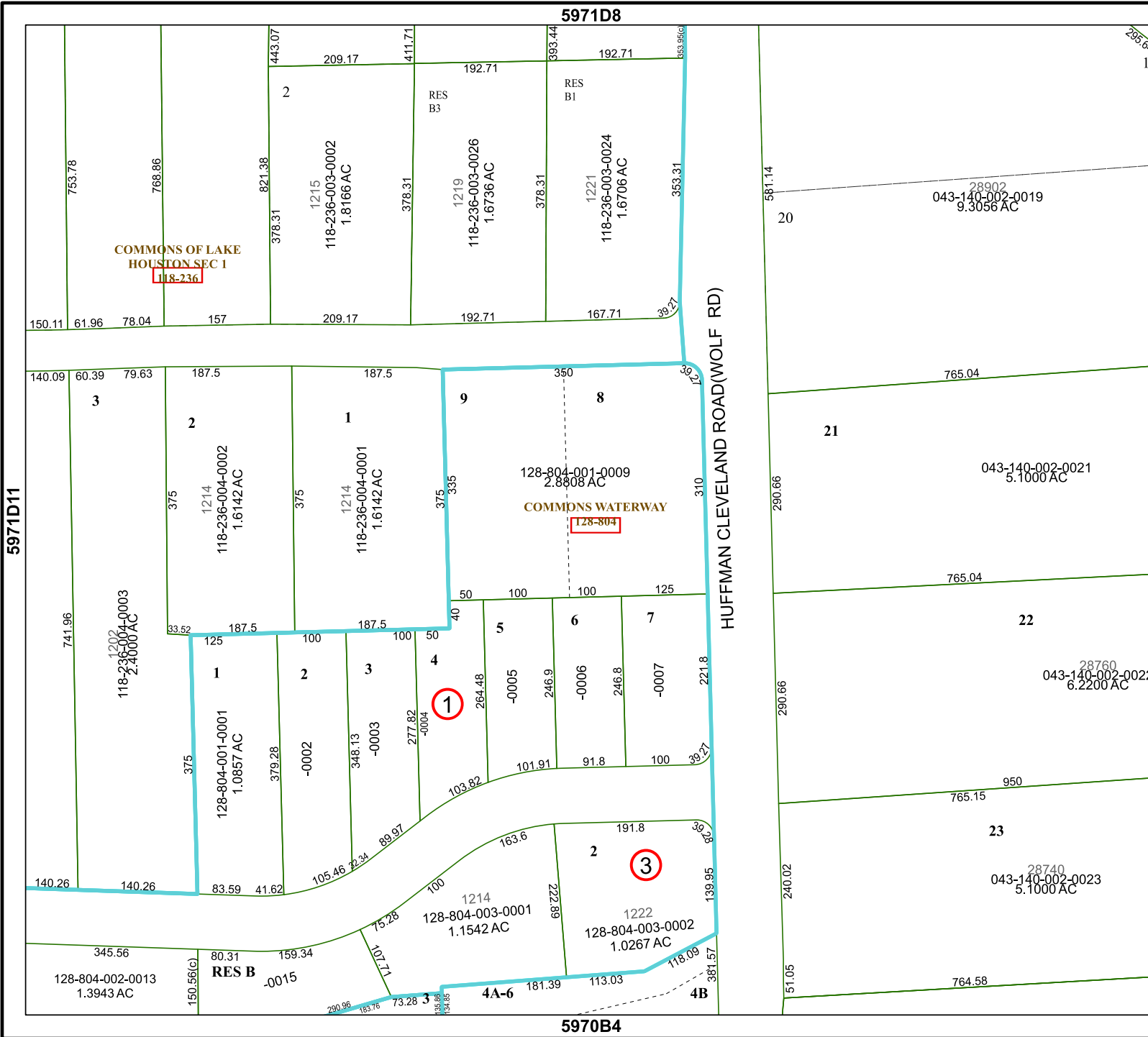
Geospatial or map data maintained by the Harris Central Appraisal District is for informational purposes and may not have been prepared for or be suitable for legal, engineering, or surveying purposes. It does not represent an on-the-ground survey and only represents the approximate location of property boundaries.

MAP LOCATION



FACET 5971D12

6	7	8	5	6
10	11	12	9	10
2	3	4	1	2



5971D11

6071C9

