

5972B3

Harris Central Appraisal District



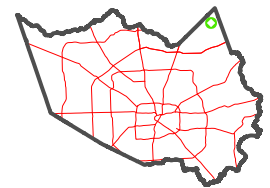
0 45 90 180 Feet

PUBLICATION DATE:
12/30/2023

Geospatial or map data maintained by the Harris Central Appraisal District is for informational purposes and may not have been prepared for or be suitable for legal, engineering, or surveying purposes. It does not represent an on-the-ground survey and only represents the approximate location of property boundaries.



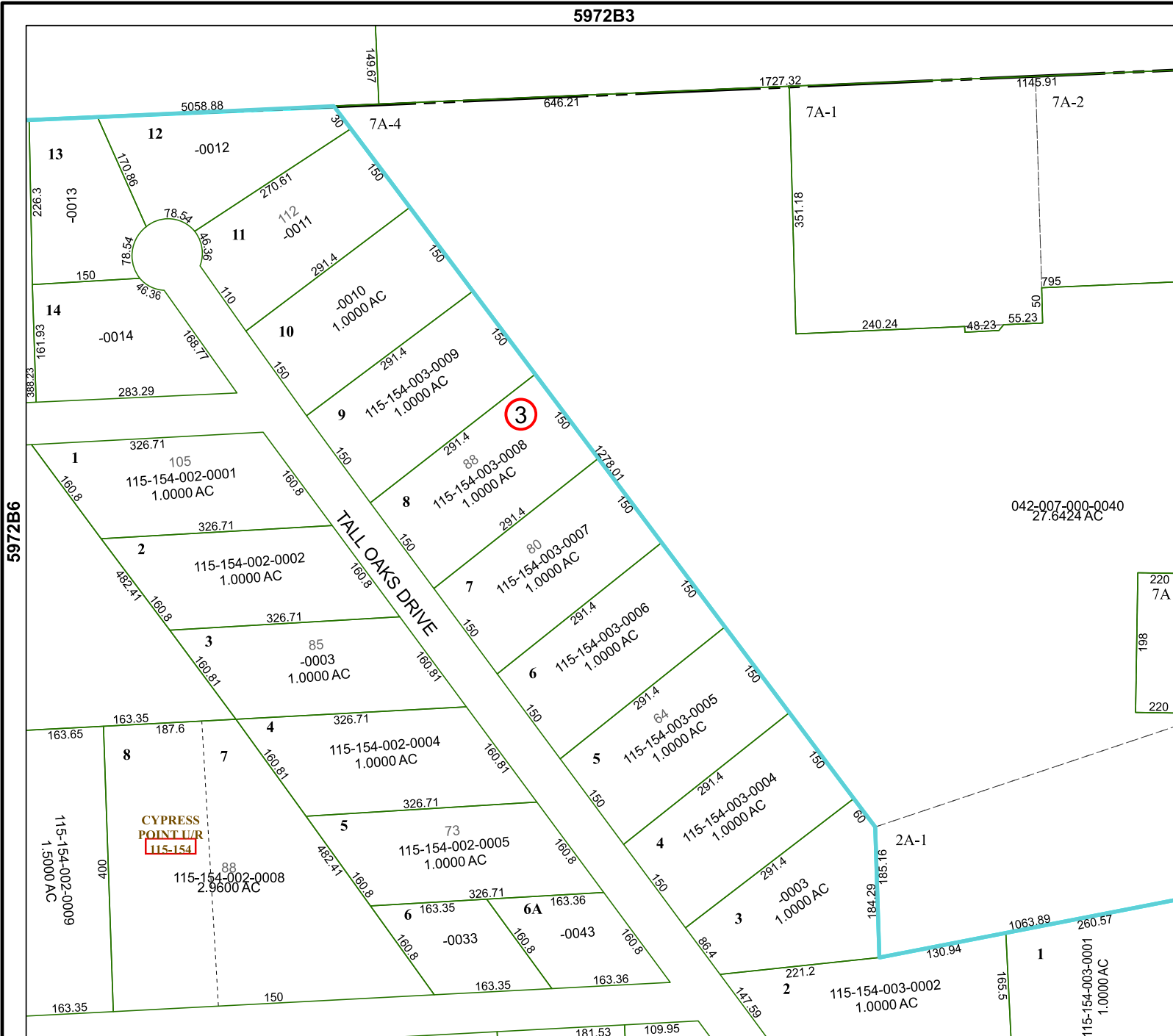
MAP LOCATION



FACET 5972B7

1	2	3	4	1
5	6	7	8	5
9	10	11	12	9

5972B11



5972B6

5972B8

042-007-000-0040
27.6424 AC

220
7A
198
220

CYPRESS POINT L/R
115-154

115-154-002-0008
2.9600 AC

115-154-003-0002
1.0000 AC

115-154-003-0001
1.0000 AC