

5972B5

CYPRESS POINT U/R

115-156

CYPRESS POINT U/R
115-154

Harris Central Appraisal District

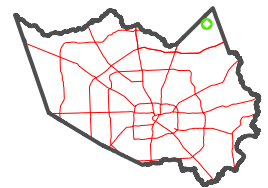


0 45 90 180 Feet

PUBLICATION DATE: 1/30/2023

Geospatial or map data maintained by the Harris Central Appraisal District is for informational purposes and may not have been prepared for or be suitable for legal, engineering, or surveying purposes. It does not represent an on-the-ground survey and only represents the approximate location of property boundaries.

MAP LOCATION

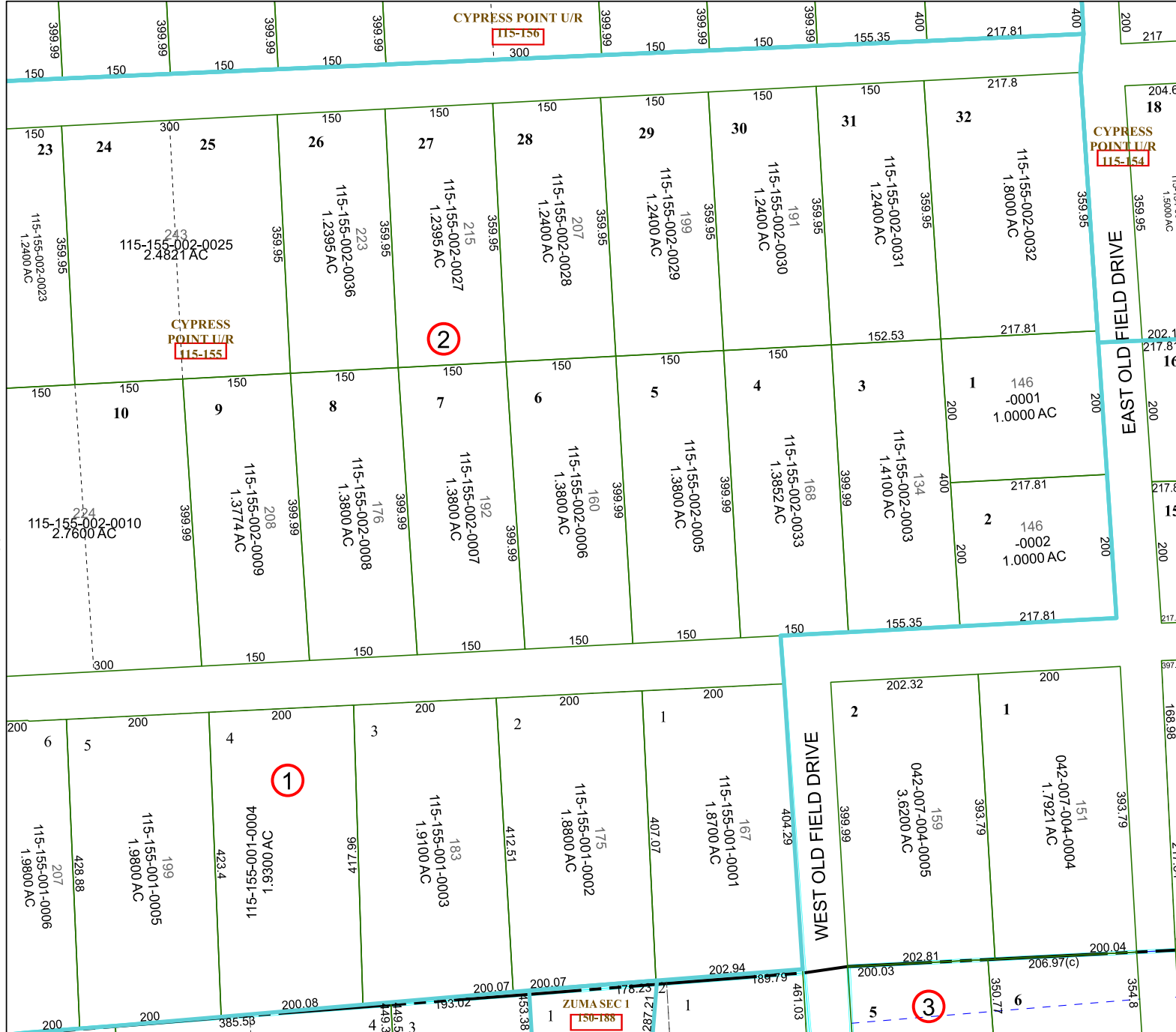


FACET 5972B9

7	8	5	6	7
11	12	9	10	11
3	4	1	2	3

5972D1

ZUMA SEC 1
150-188



21VZ765