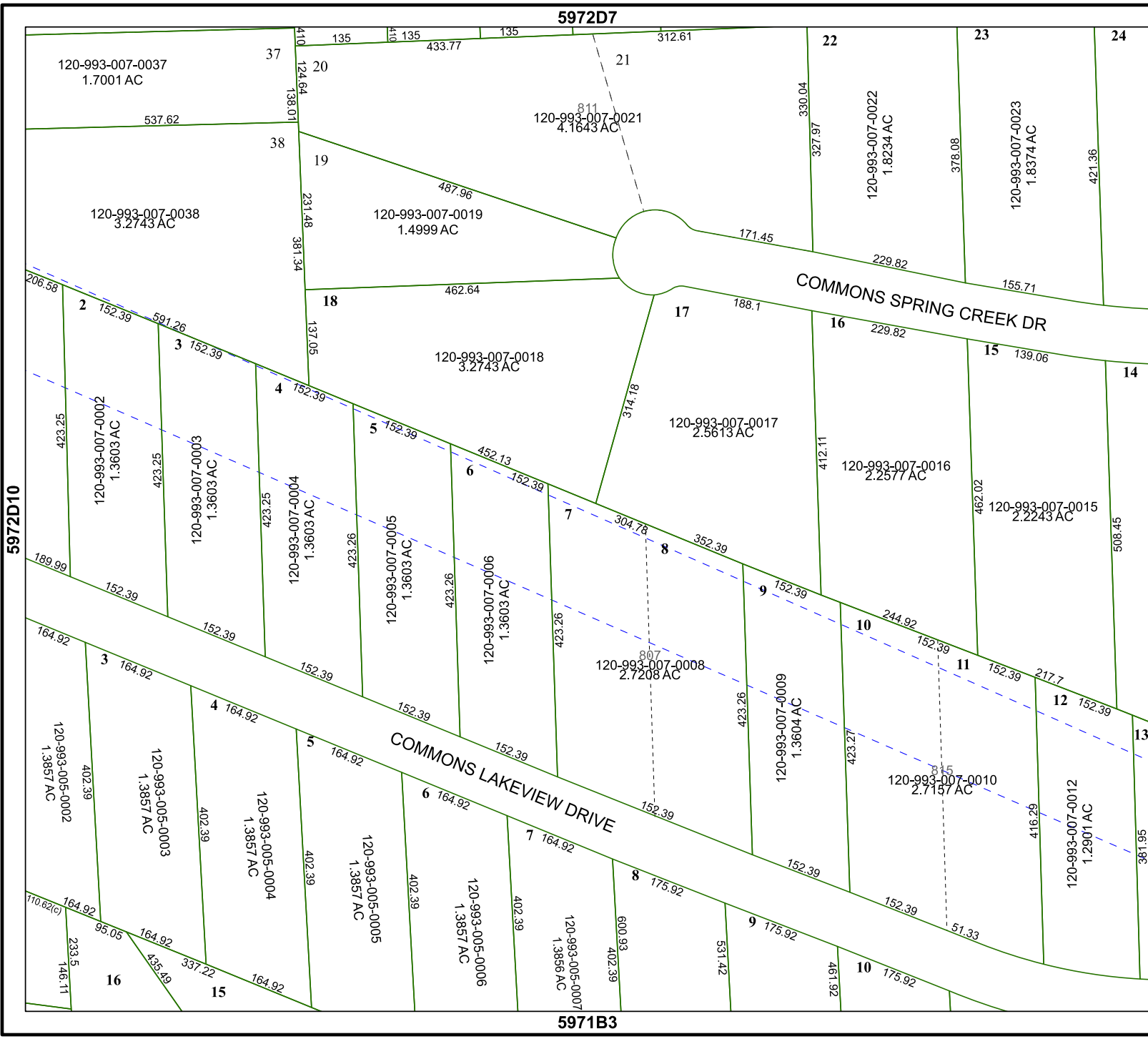


5972D7

5971B3



# Harris Central Appraisal District



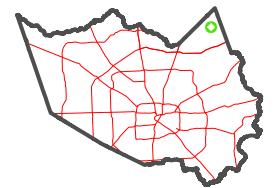
0 45 90 180 Feet

PUBLICATION DATE:  
1/13/2025

Geospatial or map data maintained by the Harris Central Appraisal District is for informational purposes and may not have been prepared for or be suitable for legal, engineering, or surveying purposes. It does not represent an on-the-ground survey and only represents the approximate location of property boundaries.



MAP LOCATION



## FACET

5972D11

5	6	7	8	5
9	10	11	12	9
1	2	3	4	1

5972D10

5972D12