

5974C11

5973A2

Harris Central Appraisal District



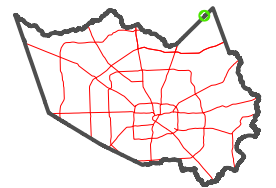
0 45 90 180
Feet

PUBLICATION DATE:
1/4/2023

Geospatial or map data maintained by the Harris Central Appraisal District is for informational purposes and may **not** have been prepared for or be suitable for legal, engineering, or surveying purposes. It does **not** represent an on-the-ground survey and only represents the approximate location of property boundaries.

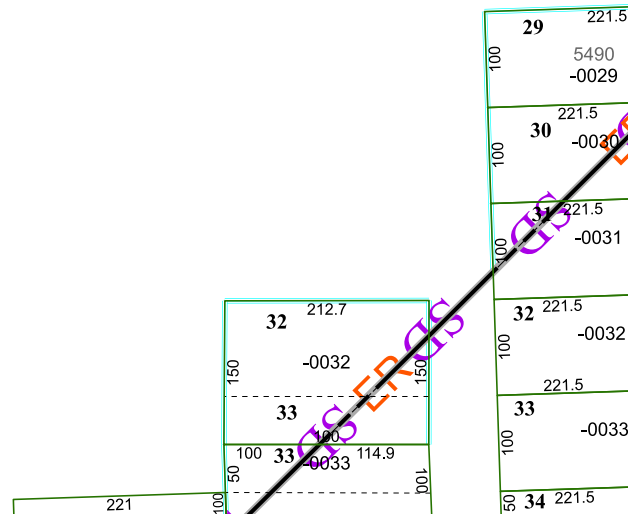


MAP LOCATION



FACET 5973A3

| | | | | |
|---|----|----|----|---|
| 9 | 10 | 11 | 12 | 9 |
| 1 | 2 | 3 | 4 | 1 |
| 5 | 6 | 7 | 8 | 5 |



5973A7